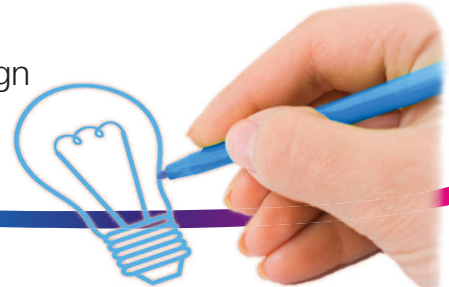


# LED Technologies

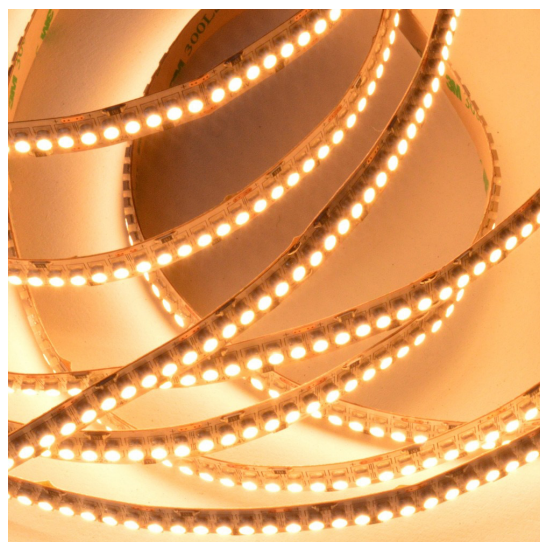
Creative LED & Effect Technology for the Trade Professional

**free** bespoke design  
& supply service

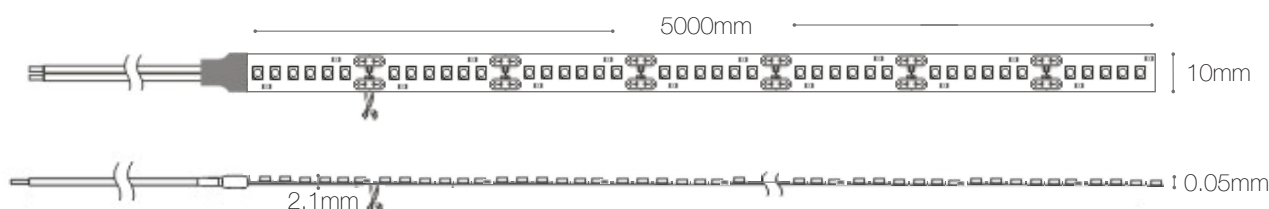


## Specification

- Product Code: 100.605
- Product Type: Flex
- Manufacturer: LED Technologies
- Guarantee Period: 5 Years
- Colour Temperature: 2600-2800K
- Bin / Step: No
- PCB Weight: 2oz
- Lumens: 16 Lumens per led
- Beam Angle: 120 degrees
- Power Consumption: 96w
- Power Factor (greater than): 80
- CE and RoHS: Yes
- CRI Rating (greater than): CRI 90
- Input Power: 24v
- Size: 10 x 0.05 x 5000mm roll
- Continuous run in mtrs: 5
- Wattage: 96w
- Equivalent to: N/A
- Average LED lamp life Hrs: 50,000
- Voltage: 24v
- Voltage Type: Constant Voltage
- Base Type: Tails
- Dimmable: Yes
- Cut Intervals: 25mm
- LED Qty: 240 LEDs Per Mtr
- LED Type: led chip 3528
- Floodlight Type: No
- IP Rating: IP20



## Dimensions (Unit: mm)



### IMPORTANT NOTE: PLEASE READ THIS

As with all LED lighting products, it's important that they are installed correctly. If used in conjunction with a PIR or any other automated switching system, it is important that the product used is compatible with LED lighting such as a contactor or soft starter. In addition do not mix LED lighting with other filament or metal halide type products on the same circuit, as this will damage the product / power supply, and will invalidate the warranty

[www.ledtechnologies.co.uk](http://www.ledtechnologies.co.uk)

### DO NOT DAISY CHAIN LED TAPE

# FIRE RISK



Maximum 5mtrs per power connection before going back to power supply. Unsure?  
Contact us on 01260 540 014