

SNAP LED

Modular LED Linear Lighting



SNAP-O-LED



Linear LED Light Bar

Our specialist Snap-O-LED light bars are a high brightness product ideal for projects requiring a slim, robust, easy to install lighting source. Enclosed in a sleek lightweight aluminium extrusion, these powerful daylight white LED chips are CRI 90 rated, coupled with a compact design this LED light bar is ideal for installation into retail outlets, furniture builds, exhibition, notice boards, restaurants and many more applications.

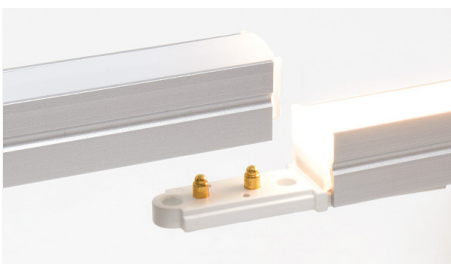
Featured Specifications



Daylight White 4000K

Our Snap-O-LED SMD2216 LED chip emits a bright and clean Daylight white with a kelvin value of 4000. Manufactured with the highest quality materials all Snap-O-LED light bars have a CRI value of greater than 90 which makes it appropriate to be used within areas where maintaining colour is important.

[Learn more about CRI Ratings](#)



Click & Connect

Snap-O-LEDs unique click and connect system allows you to connect up to 10metres* in one line with only one 24v power source, this gives you the flexibility to easily amend your design in the future. The rigid connectors click firmly into place thus providing a secure, durable joint between light bars.



Variety of lengths and shapes

Our Snap-O-LED is available in 9 unique shapes & sizes this includes 6 linear lengths and 3 angled connector pieces with fixing clips and starter cables sold separately. The angled connection pieces allow you change the direction of your design easily without the need for connector cables or soldering.



Zero loss of light

Finished with a opaque diffuser this is the perfect pixel free high brightness light source for installations into small spaces, when linked together the light bars have no loss of light between connections.

Manufactured with high quality rigid components we confidently offer a 5 year guarantee with an approximate lifespan of 40,000 hours.

Quick Specifications



Guarantee Period



24v Input Power



CRI >90

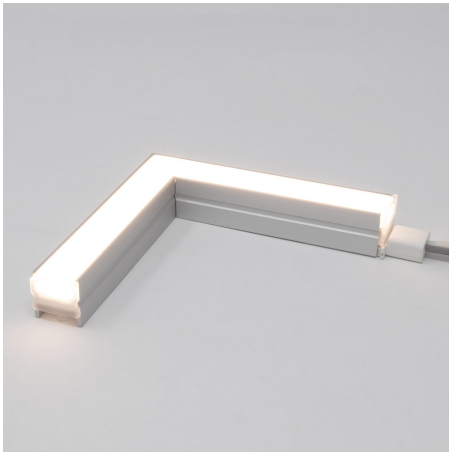


IP20 Rating



120° Beam Angle

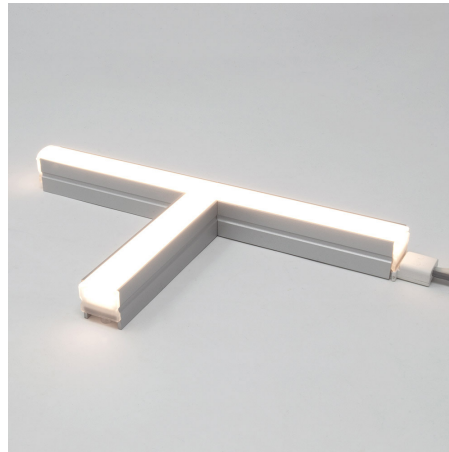
Corner Joints



L-Shape 4000K

Product code: 101.133

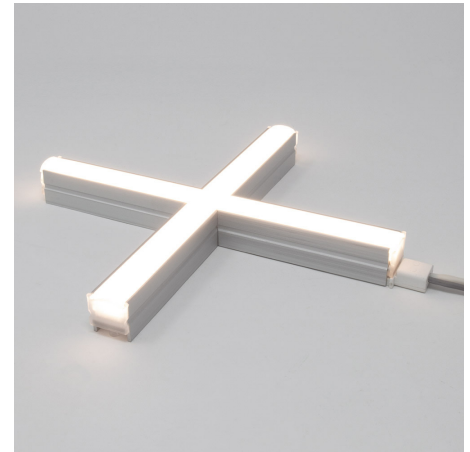
[VIEW FULL SPECIFICATION](#)



T-Shape 4000K

Product code: 101.132

[VIEW FULL SPECIFICATION](#)



X-Shape 4000K

Product code: 101.131

[VIEW FULL SPECIFICATION](#)

Linear Lengths



Linear 100mm 4000K

Product code: 101.122

[VIEW FULL SPECIFICATION](#)



Linear 192mm 4000K

Product code: 101.123

[VIEW FULL SPECIFICATION](#)



Linear 285mm 4000K

Product code: 101.124

[VIEW FULL SPECIFICATION](#)



Linear 565mm 4000K

Product code: 101.125

[VIEW FULL SPECIFICATION](#)



Linear 845mm 4000K

Product code: 101.126

[VIEW FULL SPECIFICATION](#)



Linear 1123mm 4000K

Product code: 101.127

[VIEW FULL SPECIFICATION](#)

Accessories



Starter Cable 1000mm

Product code: 101.130

Use this cable to start your installation, simply connect this to your LED Driver and power up your light bars.

[VIEW PRODUCT DETAILS](#)



Rigid connections 5pcs

Product code: 101.128

These clip in connectors are used to connect your light bars together seamlessly.

[VIEW PRODUCT DETAILS](#)



Link Cable 1000mm

Product code: 101.128

If you wish to connect your light bars around vertical surfaces or need to create a wired connection.

[VIEW PRODUCT DETAILS](#)



Install Clips and Screws 5pcs

Product code: 101.134

Fixing clips and screws for installations where wall mounting is needed.

[VIEW PRODUCT DETAILS](#)

Essential Products (to power up to 10m)



LEDTech LED Driver 200W 24V 8.3 Amp IP67

Product code: 100.551

[VIEW PRODUCT DETAILS](#)



Sunricher RF Single Channel Receiver / Controller

Product code: SR1009CS

[VIEW PRODUCT DETAILS](#)



Sunricher RF Single Colour Touch Control Handset

Product code: SR2833TS

[VIEW PRODUCT DETAILS](#)



Sunricher RF Single Colour Rotary Switch Wall Panel White (Battery powered)

Product code: SR2835DIM

[VIEW PRODUCT DETAILS](#)

This slimline Linear light bar is the newest addition to our already huge range of Creative LED Lighting solutions, with an impressive technical specification and a seamless click and connect joint system our Snap-O-LED is the perfect product for all of your domestic furniture & commercial installations.

All products are stocked in the UK and are available to ship for next day delivery*.

Speak to an expert today



01260 540014

Lines open: Mon - Thurs: 8:30 to 17:30
Fri: 8:30 to 17:00



Live Chat

Available Mon - Thurs: 8:30 to 17:15
Fri: 8:30 to 16:45

Email: support@ledtechnologies.co.uk

Web: www.ledtechnologies.co.uk

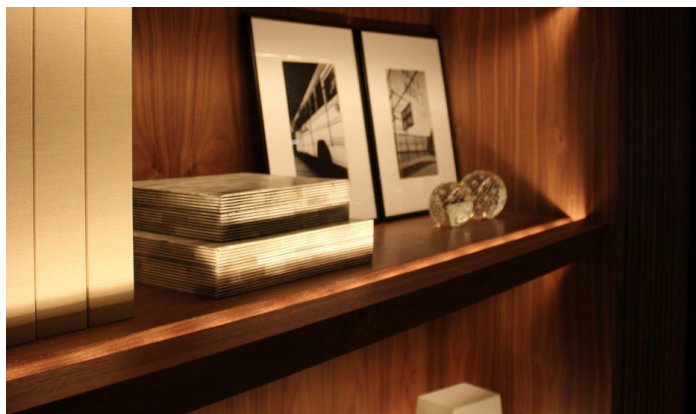
Installation Examples

Images are for illustration purposes only
Colours are not representative of actual product

Retail installations



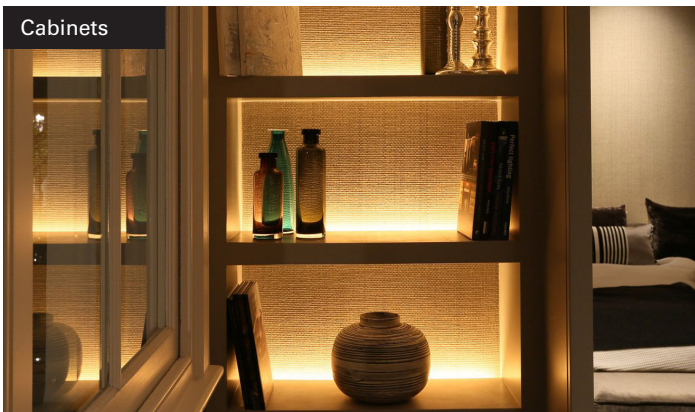
Shelving



Domestic Furniture



Cabinets



*10 metres includes joint connections, power from one end allows up to 10m in a line, power from both ends allows up to 20m in a line. Shipping times vary on season and stock levels.