



Linear 565mm 4000K

Product code: 101.125

Snap-O-LED light bars are a high brightness product ideal for projects requiring a slim, robust, easy to install lighting source. Enclosed in a lightweight aluminium extrusion the powerful daylight white 4000k LED chips are equally spaced to produce an even wash of light resulting in a pixel free output.

With its lightweight properties and easy click & connect set up, this product can be used in multiple installation areas such as; furniture builds, shopping displays, exhibitions & more.



Guarantee
Period



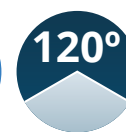
24v Input
Power



CRI >90
Rating



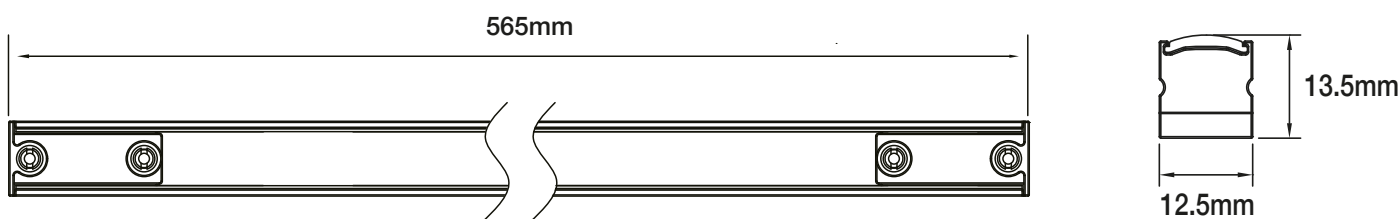
IP20
Rating



120°
Beam Angle

Product Code:	101.25
Colour Temperature	4000-4500K
Guarantee Period:	3 years
Wattage:	6W
Current:	243mA
Input Power:	DC24V
PCB Weight:	FR4 rigid PCB 2oz Copper
Weight:	80g/pcs
Size:	L565xW12.5xH13.5mm
Strip Length:	565mm
Cross Section:	W12.5xH13.5mm
Beam Angle:	120 degrees
LED Spacing:	4.3mm
Power consumption per pcs:	6W/PCS

Lumens:	6lm per LED
Luminous flux (Lumens per pcs)	390lm
Light intensity per LED (millicandelas):	1800mcd
CRI Rating (greater than):	>90
Dimmable:	yes
Cut Intervals:	cannot be cut
LED Qty:	132pcs LED
LED Type:	SMD2216
IP Rating:	IP20
Continuous run in mtrs:	10meters*
Average LED life Hrs:	50,000
Base Type:	connectors are optional
CE and RoHS:	Yes
Installation method	Metal clips and screws



Accessories



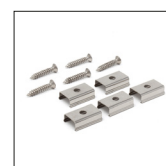
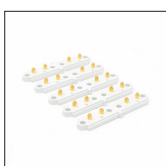
Link Cable 1mtr
Product code: 101.129



Starter Cable 1mtr
Product code: 101.130

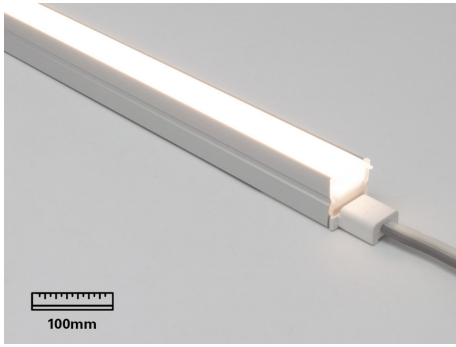


Rigid Connectors 5pcs
Product code: 101.128



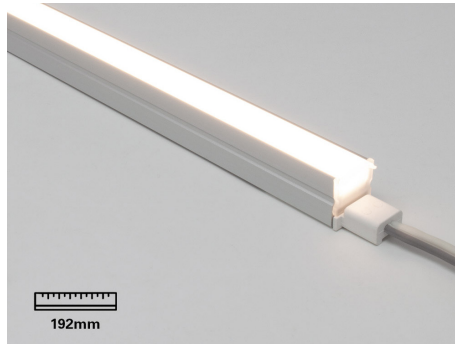
Fixing Clips 5pcs
Product code: 101.134

Full product Range



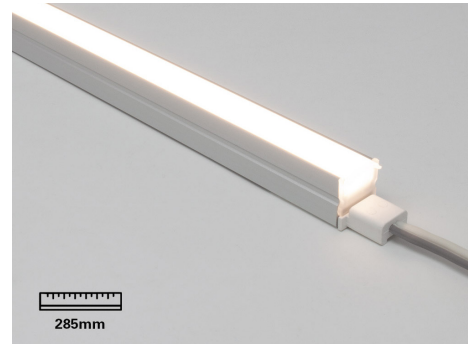
Linear 100mm 4000K

Product code: 101.122



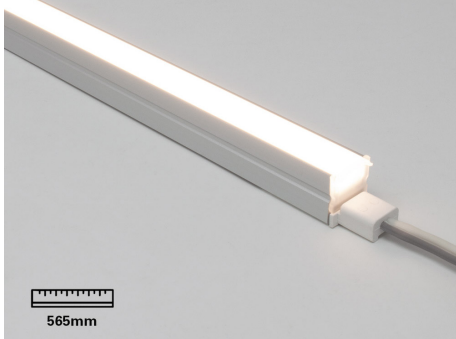
Linear 192mm 4000K

Product code: 101.123



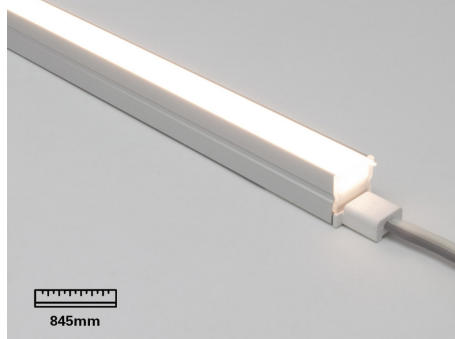
Linear 285mm 4000K

Product code: 101.124



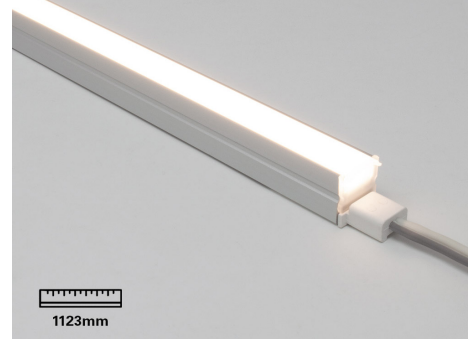
Linear 565mm 4000K

Product code: 101.125



Linear 845mm 4000K

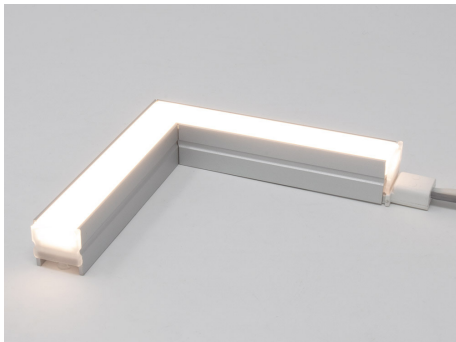
Product code: 101.126



Linear 1123mm 4000K

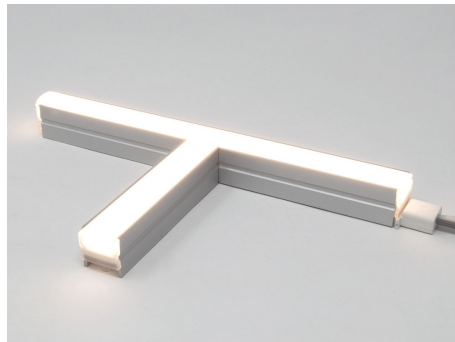
Product code: 101.127

Angled Connectors



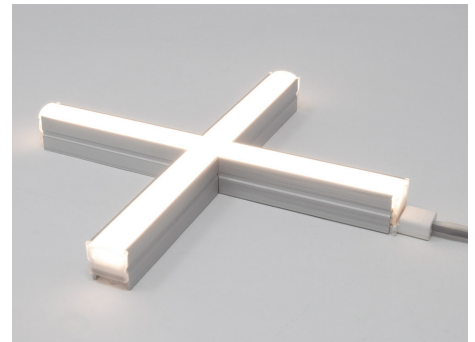
L-Shape 4000K

Product code: 101.133



T-Shape 4000K

Product code: 101.132



X-Shape 4000K

Product code: 101.131



01260 540014

Lines open: Mon - Thurs: 8:30 to 17:30

Fri: 8:30 to 17:00



Live Chat

Available Mon - Thurs: 8:30 to 17:15

Fri: 8:30 to 16:45

WE WELCOME CUSTOMERS BY APPOINTMENT ONLY

LED Technologies Ltd, (Opposite Tandom Metallurgical) Unit 1,
Third Avenue, Radnor Trading Estate, Congleton, Cheshire, CW12 4XJ

We are open **Monday to Thursday from
8-30am to 5-30pm & Friday 8-30am until 5pm**

LED Technologies
Creative LED & Effect Technology for the Trade Professional

W: www.ledtechnologies.co.uk

T: 01260 540014

E: sales@ledtechnologies.co.uk