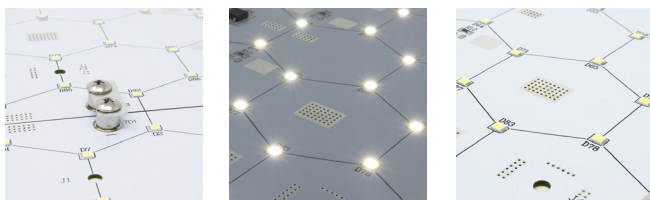


Key Features & Benefits:

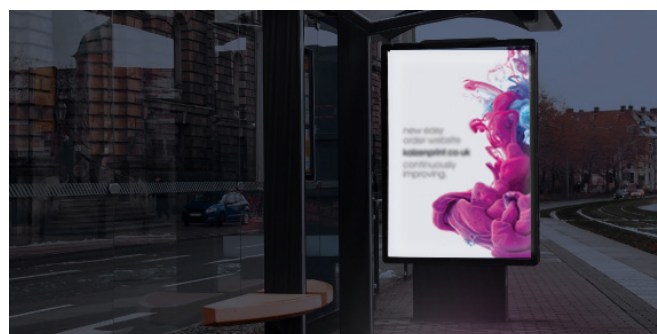
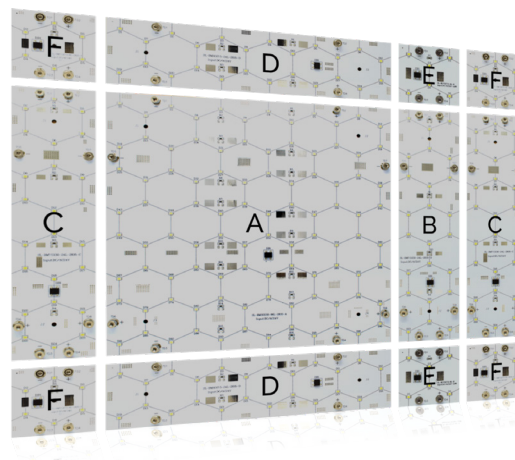
- Bespoke sizes: configure panels to make any size (from 75mm x 75mm upwards in increments of 75mm)
- Link kit supplied with each panel
- Fast, Simple and Easy construction
- Wide beam angle
- Bright consistent light
- Even light distribution
- Can create very slim light boxes (25mm deep).



Applications:

Shallow Lightboxes, Lightboxes, Indoor Signs, Backlit Signage, Bus Stops Displays, Information points and more

Model Number	100.413
Colour	Cool White 4000K/6000K
Lumens	150lm
Wattage	0.6w
Input Voltage	24V
IP Rating	IP20
Beam Angle	140°
Weight	100g
LED QTY	6
LED Chip	3527SMD
Size	75mm x 75mm x 1mm
Dimmable	Yes
Lifetime	50,000 hrs
Certification	CE, ROHS, FCC
CRI	<80



If you require Technical support or for general enquiries, Please do not hesitate to contact one of our LED Technical experts on the contact information provided.

Telephone: 01260 540014 - **Opening times:** Mon-Thur: 8:30am - 5:30pm / Fri: 8:30am - 5:00pm - www.ledtechnologies.co.uk