

Key Features & Benefits:

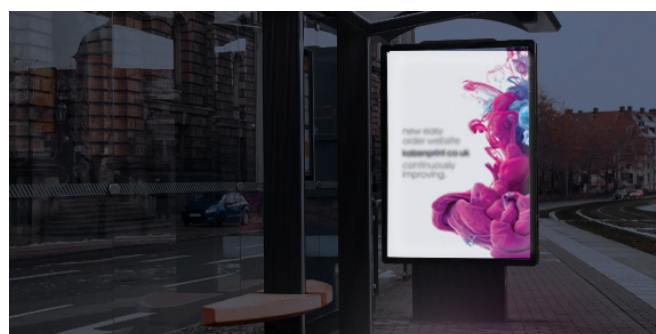
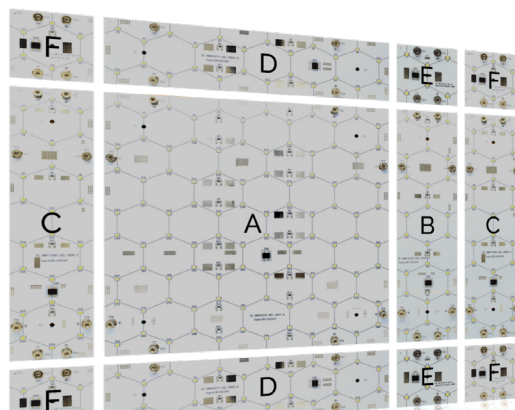
- Bespoke sizes: configure panels to make any size (from 75mm x 75mm upwards in increments of 75mm)
- Link kit supplied with each panel
- Fast, Simple and Easy construction
- Wide beam angle
- Bright consistent light
- Even light distribution
- Can create very slim light boxes (25mm deep).



Applications:

Shallow Lightboxes, Lightboxes, Indoor Signs, Backlit Signage, Bus Stops Displays, Information points and more

| | |
|----------------------|------------------------|
| Model Number | 100.411 |
| Colour | Cool White 4000K/6000K |
| Lumens | 150lm |
| Wattage | 2w |
| Input Voltage | 24V |
| IP Rating | IP20 |
| Beam Angle | 140° |
| Weight | 200g |
| LED QTY | 24 |
| LED Chip | 3527SMD |
| Size | 300mm x 75mm x 1mm |
| Dimmable | Yes |
| Lifetime | 50,000 hrs |
| Certification | CE, ROHS, FCC |
| CRI | <80 |



If you require Technical support or for general enquiries, Please do not hesitate to contact one of our LED Technical experts on the contact information provided.

Telephone: 01260 540014 - **Opening times:** Mon-Thur: 8:30am - 5:30pm / Fri: 8:30am - 5:00pm - www.ledtechnologies.co.uk