

RF + Rotary AC Phase Cut Dimmer

09.24TAR.04765

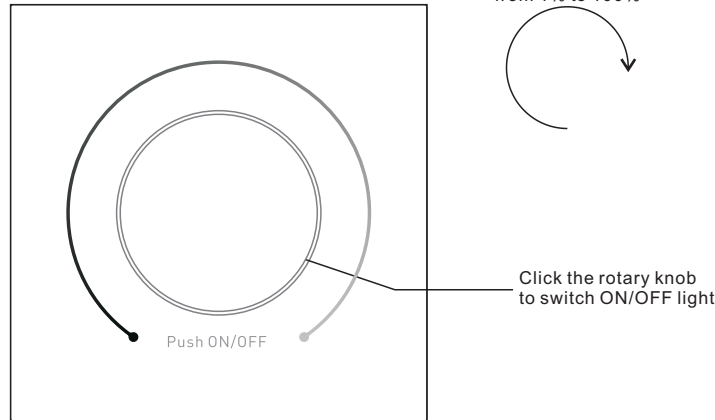


Important: Read All Instructions Prior to Installation

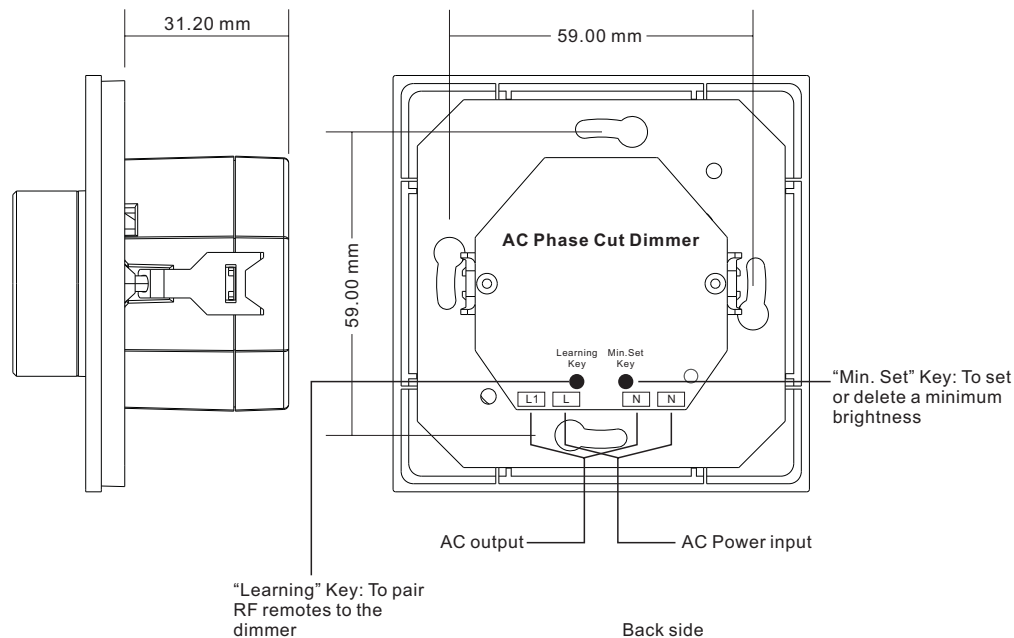
Function introduction

Rotate the knob counterclockwise to decrease light intensity from 100% to 1%.

Rotate the knob clockwise to increase light intensity from 1% to 100%



Front side



Product Data

| | |
|---------------------------|--|
| Designation | RF + Rotary AC Phase Cut Dimmer |
| Power connection | L, N AC mains |
| Operating voaltage | 100-240V AC |
| Input current | 15mA max. |
| Output | AC 100-240VAC |
| Max. Load | 250W for incandescent, halogen lamps 150W for LED lamp, dimmable LED driver |
| Perm. Cable cross-section | 1...4 mm ² |
| Ambient temperature | 0...+50 °C |
| Type of protection | IP 20 |
| Protection class | II |
| Dimensions | 80x80x53mm |

- 100-240VAC Wide Input and Output Voltage
- 1 Channel Output, 250W for working with incandescent lamp, 150W for working with LED lamp
- Input and Output with Screw Terminals, Safe and Reliable
- Trailing edge dimming
- RF + Rotary Knob Manual Control
- Great compatibility with a variety of single color RF remotes
- To dim and switch single color dimmable LED lamps, traditional incandescent and halogen lights
- Innovative minimum brightness setting function
- Radio frequency: 869.5MHz

Safety & Warnings

- DO NOT install with power applied to device.
- DO NOT expose the device to moisture.

Operation

Do wiring according to connection diagram.

Pair to RF sender with learning key:

1. Connect and wire up the RF receiver correctly, power on.
2. Click on/off button of the remote/panel to turn on it → Click "Learning" key on the receiver → Click a zone number (ignore this step if the remote/panel has only 1 zone) → Touch the color wheel/slider (click any button except on/off and zone buttons if the remote has no color wheel/slider) → LED lights connected with the receiver will blink to indicate successful pairing to the selected zone

Note: 1) Please Do Not push or rotate the knob during pairing process, otherwise pairing may fail.
2) one receiver can be paired with max 8 remote controls.

Pairing to RF sender without learning key (Applicable to RF senders with color wheel):

1. Pairing to RF remotes which have color wheel (single color): power off and power on the receiver → turn on the remote, then click a zone number twice and press and hold it continuously and quickly within 10 seconds → LED light connected with the receiver will flash to indicate successful pairing to the selected zone.
2. Pairing to multi-zone RF touch panels which have color wheel (single color): power off and power on the receiver → turn on the panel, then click a zone number three times and press and hold it continuously and quickly within 10 seconds → LED light connected with the receiver will flash to indicate successful pairing to the selected zone.

Note: RF remotes without color wheel, single zone RF touch panels with color wheel, and RF touch panels without color wheel do not have this function.

Pairing to RF sender without learning key (Applicable to all compatible RF senders):

Re-power on the receiver three times continuously to set it into pairing status → Within 15 seconds, click on/off button of the remote/panel to turn on it → Click a zone number (ignore this step if the remote/panel has only 1 zone) → Touch the color wheel/slider (click any button except on/off and zone buttons if the remote has no color wheel/slider) → LED lights connected with the receiver will blink to indicate successful pairing to the selected zone

Delete pairing with learning key:

1. Wire up the RF receiver correctly, power on.
2. Press and hold down the “ Learning Key” button on receiver for over 3 seconds until the connected led light on receiver flickers twice, which means well deleted. (Do Not push or rotate the knob, or deleting may fail)

How to stop running mode of single color LED light caused by RGBW sender interference:

1. When pairing single color LED light to a single color remote, it might be interfered and paired by nearby RGBW senders, which might control the single color light into running mode. The running mode can not be stopped by the paired single color remote or by delete pairing.
2. Then we need a remote or wall panel that has color wheel, and pair the remote or wall panel to the receiver via above mentioned pairing method “Pairing to RF sender without learning key (Applicable to RF senders with color wheel)”, then touch the color wheel to stop the running mode.
3. Then delete pairing and pair the receiver to the single color remote again, it can be controlled by the remote again.

Setting minimum brightness:

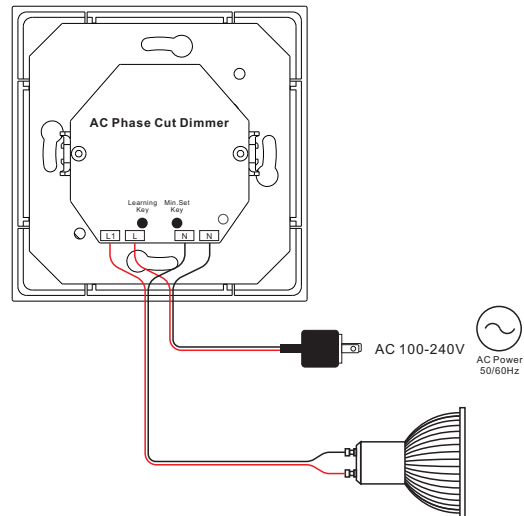
Adjust brightness to a level you would like, press and hold down the “Min. set” key until the light flashes to set the level as minimum brightness value, it is dimmable from this minimum brightness value to 100%.

Delete the minimum brightness:

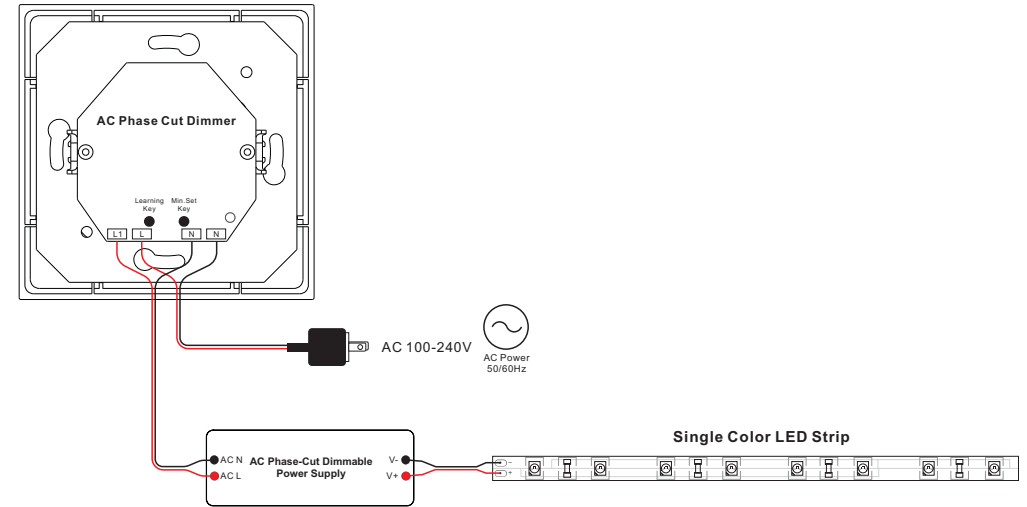
Adjust brightness to maximum level, then click the “Min. set” key, the connected light will flash, which means the minimum brightness value is deleted. It is dimmable from 1% to 100% then.

Wiring diagram

1. Connect with AC dimmable light



2. Connect with AC Phase-Cut dimmable driver



Installation

