

Thank you for purchasing Led Technologies bendable led Tape extrusion.

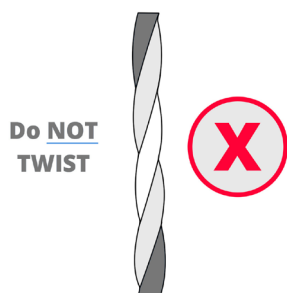
This extrusion is only suitable for **IP20** none waterproof led tapes.

Included in the set is: 5 x 2mtr Extrusion, 5 x Covers, 10 x end caps and 20 x fixing clips.

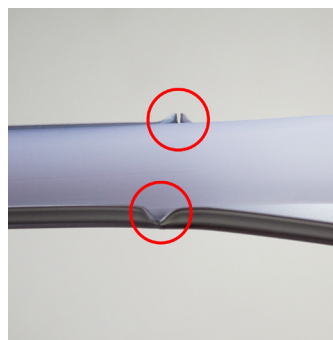
INSTALLATION & OPERATING INSTRUCTIONS



Maximum bend
300mm either way



Do NOT twist



Over bending will split
the extrusion and will
make it impossible to
fit the cover



Do not repeatedly bend
plan the installation

- You may cut the extrusion using a good quality hack-saw – do this before any bending takes place.
- Bend first and fix. Fit the LED tape and clip the cover on – do not fit the led tape first as this will stretch and damage the led PCB.

TECHNICAL SUPPORT

If you require Technical support for either the installation or operation of this product, Please do not hesitate to contact one of our LED technical experts on the contact information provided.

Telephone: 01260 540014 UK BASED Opening times: Mon-Fri: 8:30am - 5:00pm www.ledtechnologies.co.uk