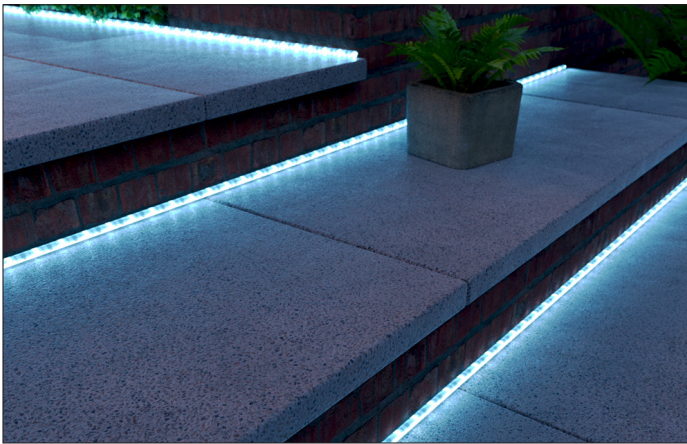


## Flexi Rope LED Aquamarine 50m



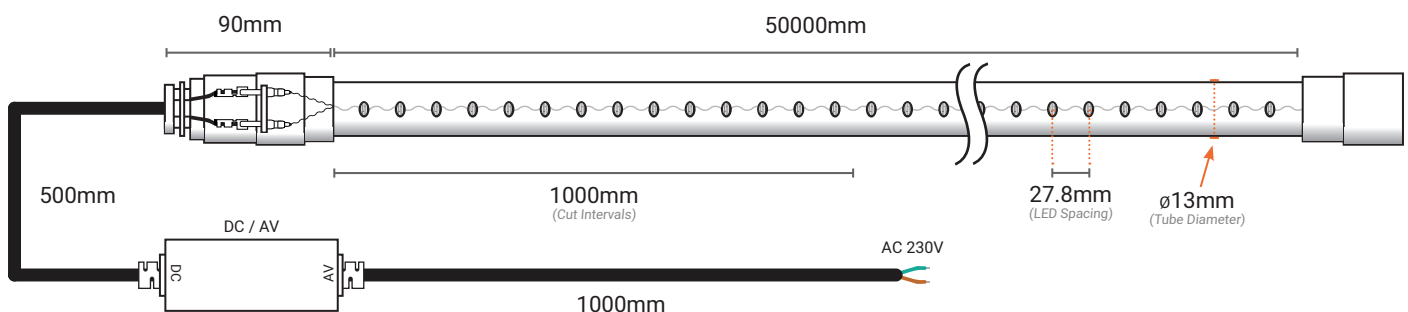
Product Code:	101.978
Product Type:	Flexi LED Rope
Guarantee Period:	1 Year

### Features & Benefits:

- Transparent PVC Rope for high luminosity
- UV resistant
- 60mm Maximum Bend Diameter
- Aquamarine LED's (450-455nm)
- 36 x LED's at 3W per Metre
- IP65 rated for outdoor / indoor use
- All LED's fixed in one direction for even light
- Can be cut to size at 1m intervals

 **7.85kg** appx Per Roll  **0.16kg** appx Per Metre

### Dimensions (Unit: mm)



### Notes:

**STARTER KIT NOT INCLUDED**

- Cutting Marker: [www.ledtechnologies.co.uk](http://www.ledtechnologies.co.uk)  
- The Cutting Points will be displayed on the Flexi Rope **as seen above**. The LED Rope is to be cut along the **SCISSORS ICON** to ensure that no damage is done to the product.



We reserve the right to change specifications without notice. E&OE

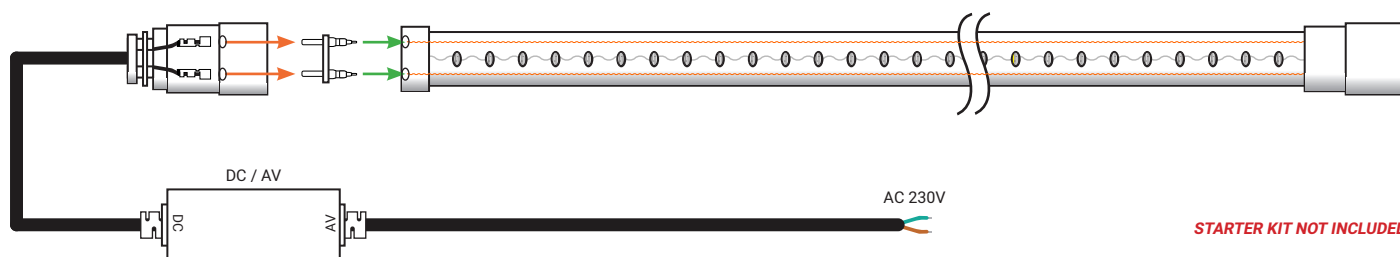
If you require Technical support or for general enquiries, please do not hesitate to contact one of our LED Technical experts on the contact information provided.

Telephone: **01260 540014**  
Opening times: Mon-Thur: 8:30am - 5:00pm  
Fri: 8:30am - 4:30pm  
[www.ledtechnologies.co.uk](http://www.ledtechnologies.co.uk)

## Flexi Rope LED Aquamarine 50m

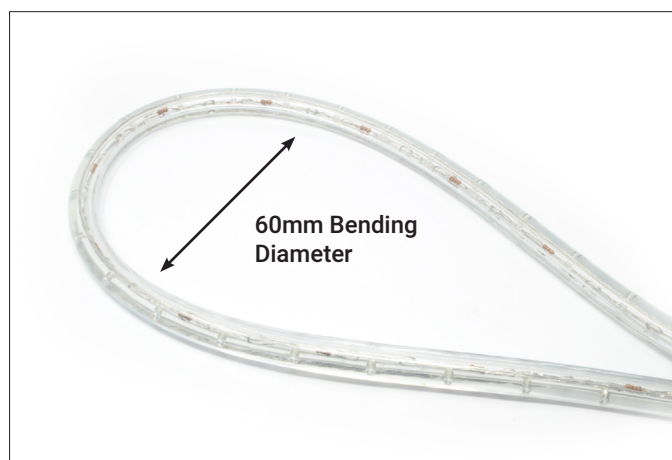
### Connection Diagram

1. Starter pin must be connected to the start of the LED Rope.
2. Firmly insert in to the two holes to connect to the wires inside the LED Rope.
3. Slide your Solder Heat Shrink Sleeve over the end of the LED Rope.
4. Push the connector on to the end of the LED Rope, ensuring the connector pins go through the holes.



### Info

### Accessories (Sold Separately)



Flexi LED Rope is a decorative product for Professional installation and set up only. Installation must be adhered to. We provide a manual and video instruction. This must be followed correctly to ensure a long life.

#### Your warranty is void if we deem the following:

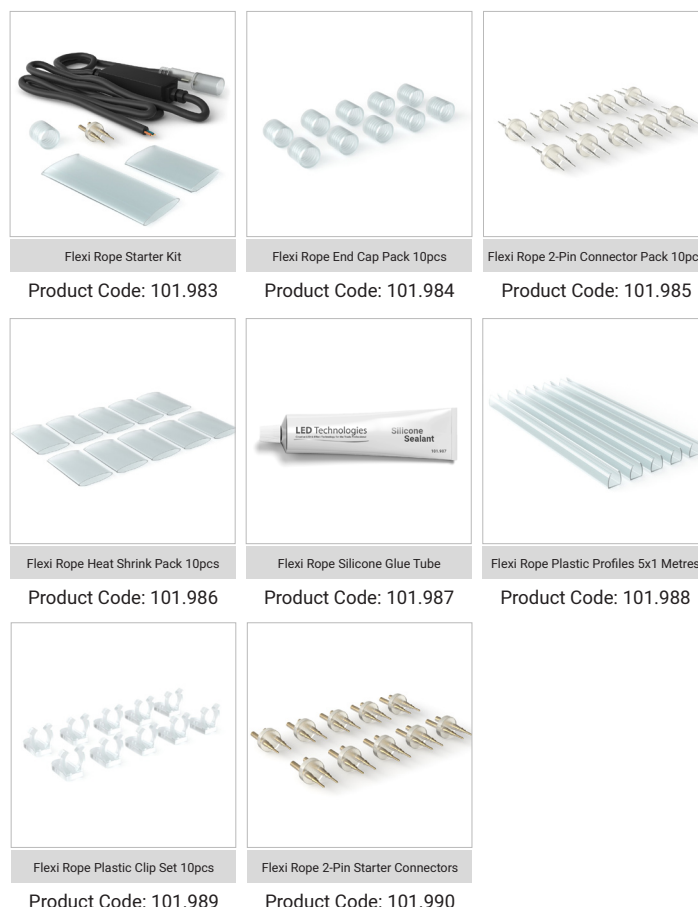
Water ingress due to incorrect assembly – water ingress can happen slowly and failure may take some time, you are not covered under warranty if there is any evidence of water ingress.

LED Failure. If any Leds have failed then we reserve the right to replace 1mtr lengths and will provide the joining connectors – we will not replace the whole roll. Normally a small number of led will fail in the 1st year, and this is not a product fault and will be considered acceptable.

**+/-10% Tolerance on all specifications.**

**We reserve the right to change specifications without notice. E&OE**

**This manual is by no means exhaustive.**



Telephone: 01260 540014

Opening times: Mon-Thur: 8:30am - 5:00pm

Fri: 8:30am - 4:30pm

If you require Technical support or for general enquiries, please do not hesitate to contact one of our LED Technical experts on the contact information provided.



[www.ledtechnologies.co.uk](http://www.ledtechnologies.co.uk)