

ZigBee Wireless Touch Dimmer Switch

70100016 Revised 20220921

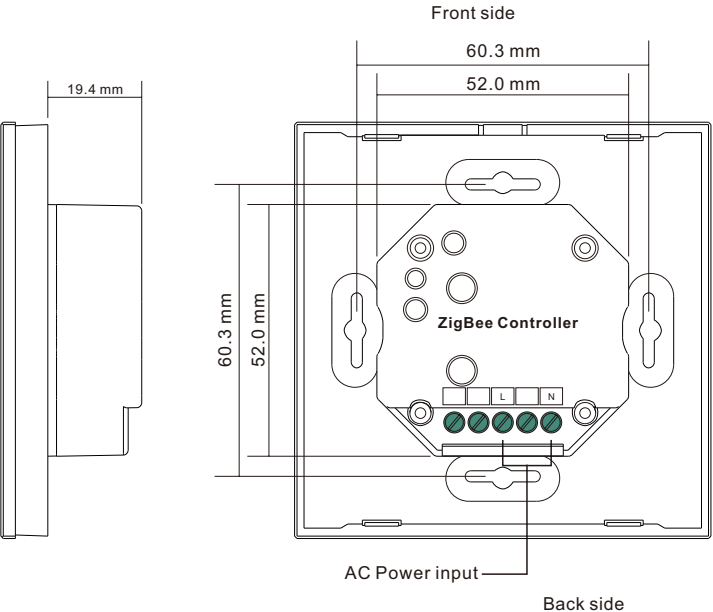
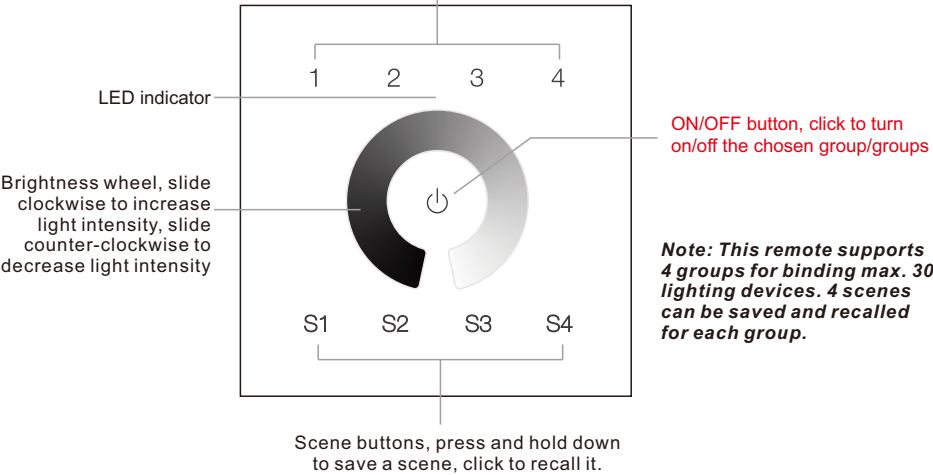


Important: Read All Instructions Prior to Installation

Revision Log	Previous Version	20220921 Revision
ON/OFF button function	Turn on/off all groups	Turn on/off the chosen group/groups
Group buttons function	Hold to turn on/off corresponding group	Hold to enter touchlink pairing mode
Operation Chapter 4	Touchlink only has normal operation mode	Touchlink shortcut operation mode added

Function introduction

Group numbers: click to choose the group, multiple groups can be chosen by clicking group numbers one by one within 3 seconds, press and hold down to enter touchlink pairing mode and add light device to the group



Product Data

Protocol	ZigBee 3.0
Input Voltage	100-240VAC
Transmission Frequency	2.4GHz
Transmission Range (free field)	30m
Protection Type	IP20
Dimming Range	0.1%-100%
Dimensions	86x86x29.1mm

- ZigBee wireless dimmer switch based on ZigBee 3.0
- Full touch glass interface, smooth light intensity control
- Enables to pair ZigBee lighting devices via touchlink commissioning without coordinator
- Supports find and bind mode to pair with ZigBee lighting devices
- Supports 4 groups for binding max. 30 lighting devices
- 2.4 GHz global operation
- Transmission range up to 30m
- Compatible with universal ZigBee Gateway products
- Compatible with universal ZigBee dimmable lighting devices

ZigBee Clusters Supported by This Remote Are As Follows:

Input clusters:

- Basic
- Power Configuration
- Identify
- Diagnostics

Output clusters:

- Identify
- Scenes
- Group
- On/off
- Level control
- Ota

Safety & Warnings

- DO NOT install with power applied to the device.
- DO NOT expose the device to moisture.

Operation

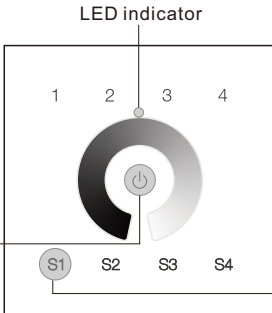
1.This ZigBee dim remote is a wireless transmitter that communicates with a variety of ZigBee compatible systems. This transmitter sends wireless radio signals that are used to remotely control a compatible system.

2.This ZigBee remote supports 4 groups for binding max. 30 lighting devices and enables to control single color ZigBee lighting devices.

3. Zigbee Network Pairing through Coordinator or Hub (Added to a Zigbee Network)

Step 1: Remove the remote from previous zigbee network if it has already been added to it, otherwise pairing will fail. Please refer to the part "Factory Reset Manually".

Step 3: Press and hold down until LED indicator turns on.



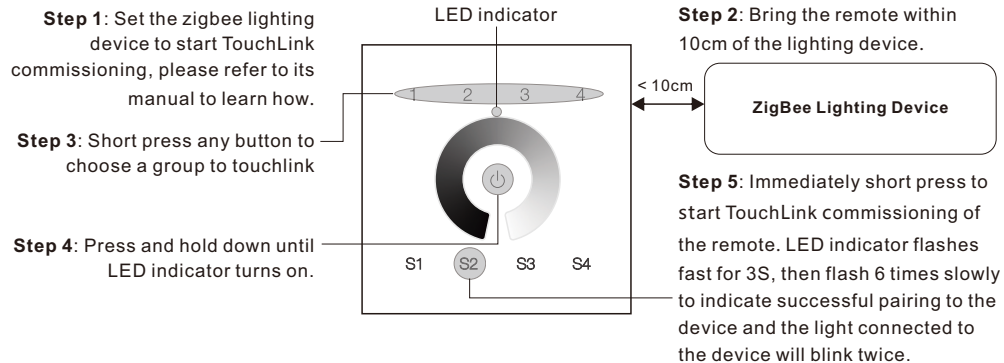
Step 2: From your zigbee controller or hub interface, choose to add device or accessory and enter Pairing mode as instructed by the controller.

Step 4: Immediately short press to search nearby network, indicator flashes every 1 second, 20 seconds timeout if there is no network. Indicator will then blink 5 times quickly for successful pairing.

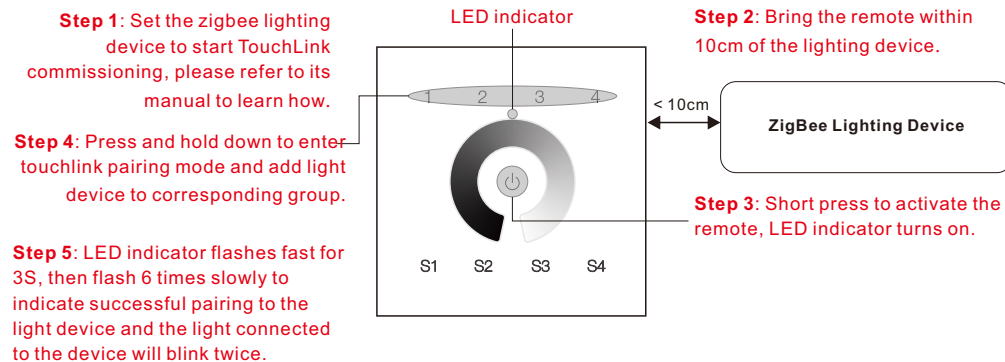
Note: 1) After pairing successfully, the remote information will appear on the controller or hub interface.
2) No remote information will appear on the hub interface if pairing to some Zigbee hubs.

4. TouchLink to a Zigbee Lighting Device

1) Normal Operation



2) Shortcut Operation



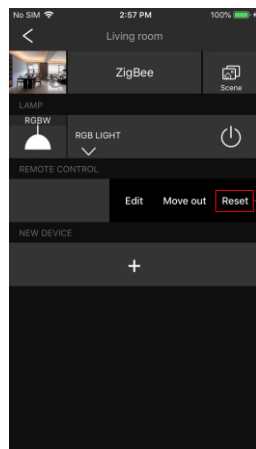
Note: 1) Directly TouchLink (both not added to a ZigBee network), each remote can link with 30 devices.

2) TouchLink after both added to a ZigBee network, each remote can link with max. 30 devices.

3) For Third-Party Automation Devices, add remote and device to network first then TouchLink.

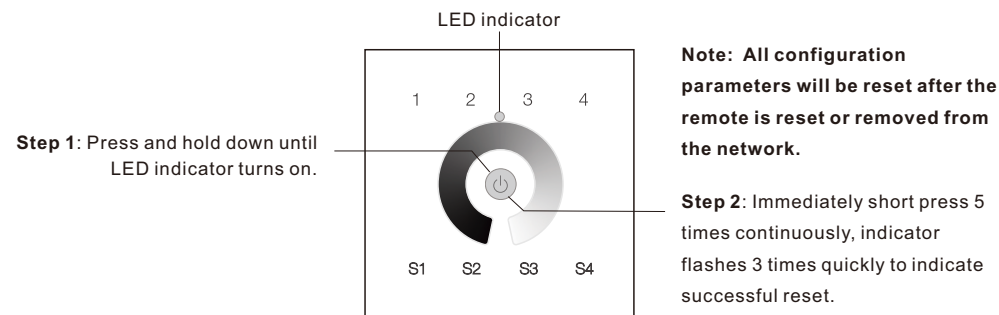
4) After TouchLink, the remote can control the linked lighting devices.

5. Removed from a Zigbee Network through Coordinator or Hub Interface

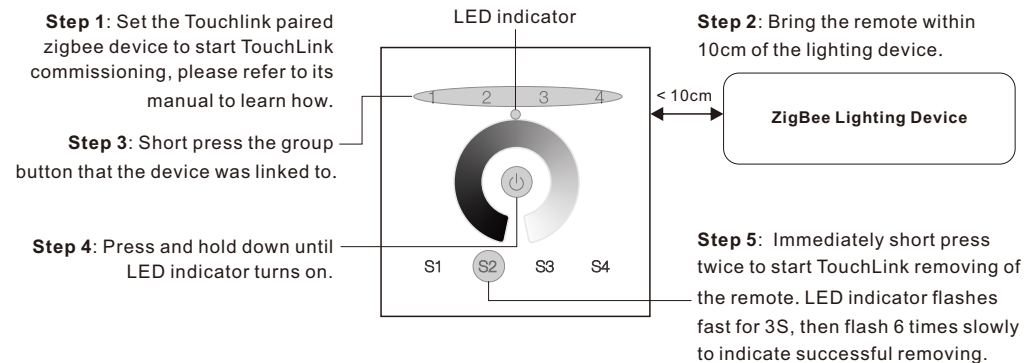


From your ZigBee controller or hub interface, choose to delete or reset the remote as instructed, indicator flashes 3 times quickly to indicate successful removing.

6. Factory Reset Manually

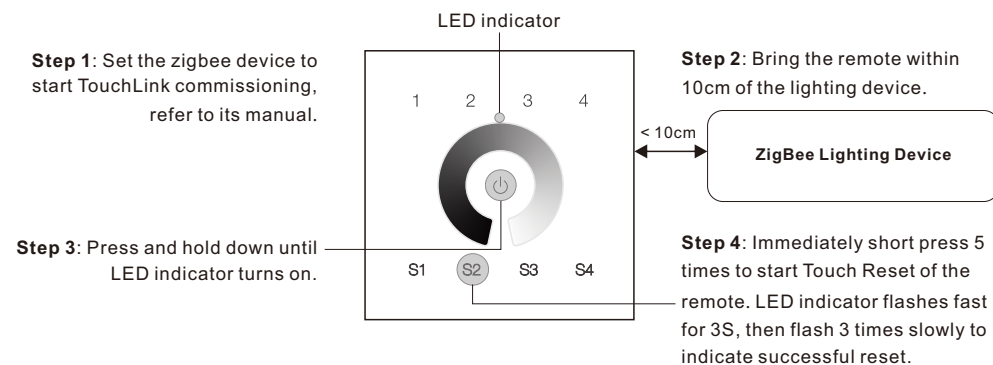


7. Remove a Touchlink Paired ZigBee Lighting Device



8. Factory Reset a Lighting Device (Touch Reset)

Note: the device shall be added to a network, the remote added to the same one or not added to any network.



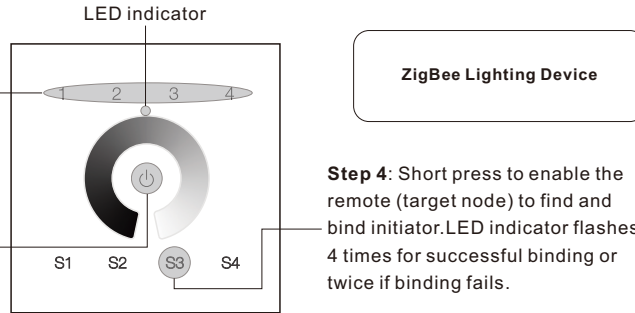
9. Find and Bind a Zigbee Lighting Device

Note: Make sure the device and remote already added to the same zigbee network.

Step 1: Start find and bind mode on the Zigbee lighting device (initiator node) and enable it to find and bind target, refer to its manual.

Step 2: Short press a group button that you would like to bind the device to.

Step 3: Press and hold down until LED indicator turns on.



Step 4: Short press to enable the remote (target node) to find and bind initiator. LED indicator flashes 4 times for successful binding or twice if binding fails.

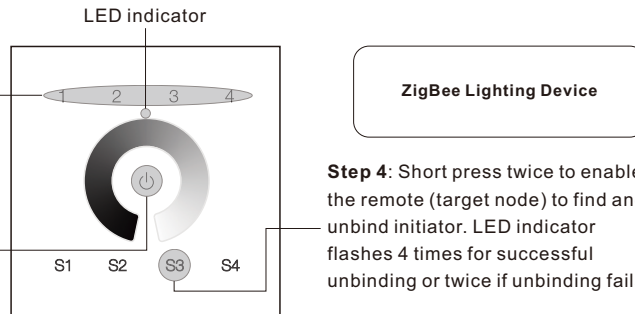
Note: Each remote can bind max. 30 lighting devices.

10. Find and Unbind a Zigbee Lighting Device

Step 1: Start find and bind mode on the Zigbee lighting device (initiator node) and enable it to find and bind target, refer to its manual.

Step 2: Short press the group button that the device already bound to.

Step 3: Press and hold down until LED indicator turns on.

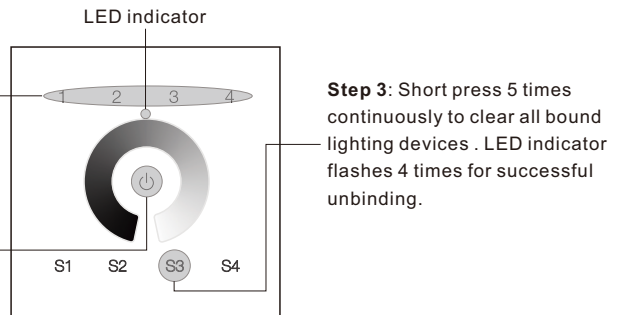


Step 4: Short press twice to enable the remote (target node) to find and unbind initiator. LED indicator flashes 4 times for successful unbinding or twice if unbinding fails.

11. Clear All Find and Bind Mode Paired Lighting Devices

Step 1: Short press to choose the group that you would like to unbind all devices.

Step 2: Press and hold down until LED indicator turns on.



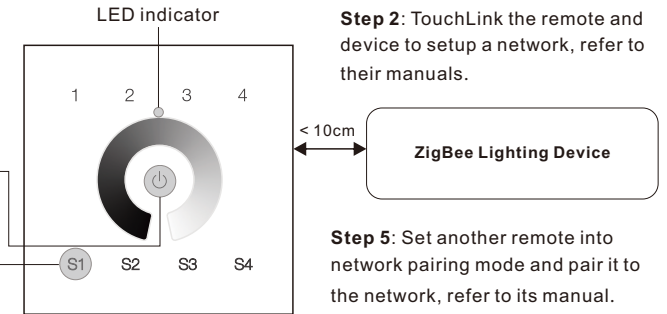
Step 3: Short press 5 times continuously to clear all bound lighting devices. LED indicator flashes 4 times for successful unbinding.

12. Setup a Network & Add Devices to the Network (No Coordinator or Hub Required)

Step 1: Factory reset the remote and the lighting device, refer to their manuals.

Step 3: Press and hold down until LED indicator turns on.

Step 4: Short press the group button that the device was linked to.



Step 2: TouchLink the remote and device to setup a network, refer to their manuals.

Step 5: Set another remote into network pairing mode and pair it to the network, refer to its manual.

Step 6: Add more remotes to the network as you would like.

Step 7: Factory reset the lighting devices that you would like then add them to the network, refer to their manuals.

Step 8: Touchlink to pair the added remotes and lighting devices, refer to their manuals. Each remote can link with max. 30 lighting devices. Each lighting device can be linked by max. 30 remotes.

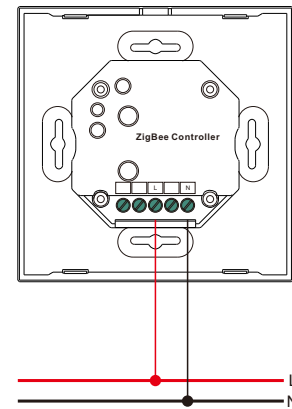
13. OTA

The remote supports firmware updating through OTA, and will acquire new firmware from zigbee controller or hub every 10 minutes automatically.

14. How to Check Whether the Remote Belongs to a Network or not

Short press any other buttons except group buttons, indicator blinking means the remote has already been added to a network, no blinking of indicator means the remote does not belong to any network.

Wiring diagram



Installation

