

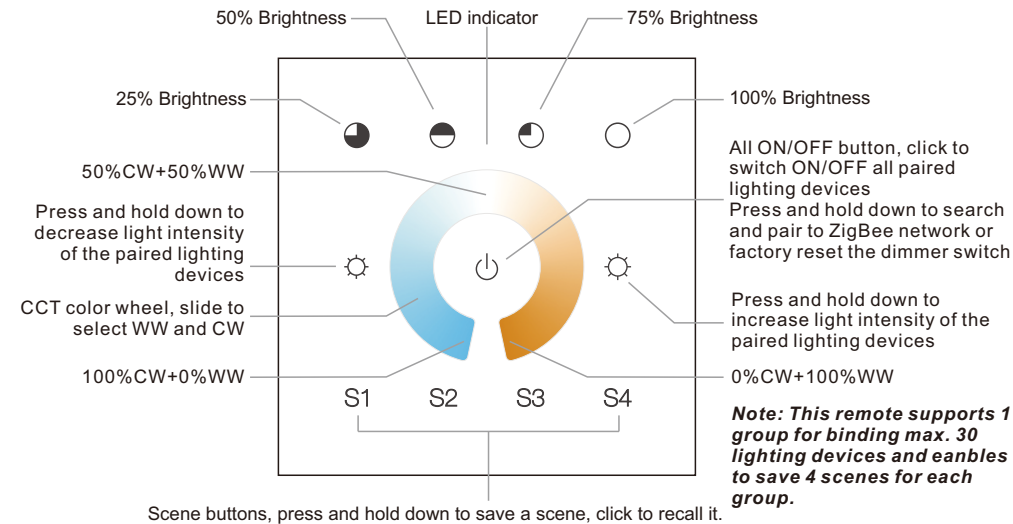
# ZigBee Wall Touch CCT Remote



70100018

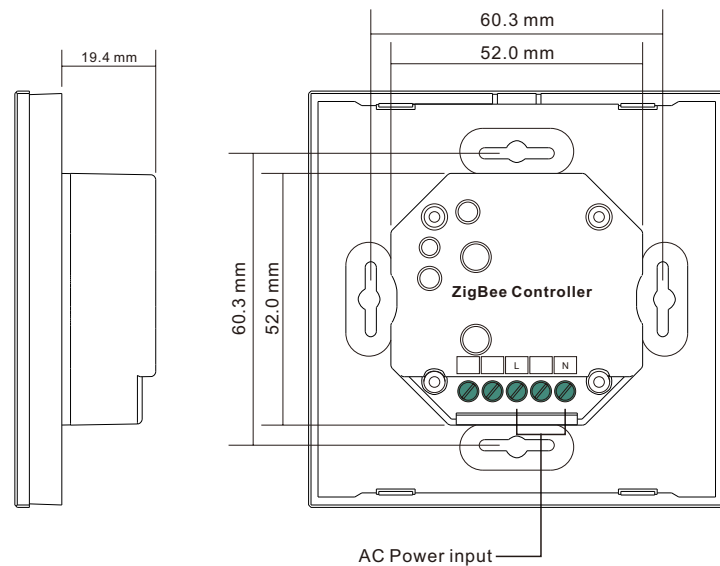
**Important:** Read All Instructions Prior to Installation

## Function introduction



Scene buttons, press and hold down to save a scene, click to recall it.

Front side



Back side

## Product Data

Protocol	ZigBee 3.0
Input Voltage	100-240VAC
Transmission Frequency	2.4GHz
Transmission Range (free field)	30m
Protection Type	IP20
Dimming Range	0.1%-100%
Dimensions	86x86x29.1mm

- ZigBee CCT remote based on ZigBee 3.0
- Full touch glass interface, smooth CCT and light intensity control
- Enables to pair ZigBee lighting devices via touchlink commissioning without coordinator
- Supports find and bind mode to pair with ZigBee lighting devices in the same network
- Supports 1 group for binding max. 30 lighting devices
- 2.4 GHz global operation
- Transmission range up to 30m
- Compatible with universal ZigBee Gateway products
- Compatible with universal CCT ZigBee lighting devices

## ZigBee Clusters Supported by This Remote Are As Follows:

### Input clusters:

- Basic
- Power Configuration
- Identify
- Diagnostics

### Output clusters:

- Identify
- Scenes
- On/off
- Level control
- Color control
- Ota

## Safety & Warnings

- DO NOT install with power applied to the device.
- DO NOT expose the device to moisture.

## Operation

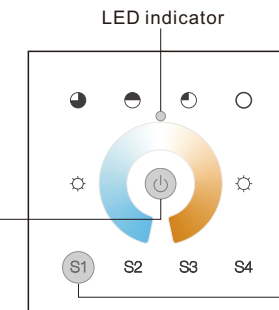
1.This ZigBee CCT remote is a wireless transmitter that communicates with a variety of ZigBee compatible systems. This transmitter sends wireless radio signals that are used to remotely control a compatible system.

2.This ZigBee remote supports 1 group for binding max. 30 lighting devices and enables to control tunable white ZigBee lighting devices.

## 3. Zigbee Network Pairing through Coordinator or Hub (Added to a Zigbee Network)

**Step 1:** Remove the remote from previous zigbee network if it has already been added to it, otherwise pairing will fail. Please refer to the part "Factory Reset Manually".

**Step 3:** Press and hold down until LED indicator turns on.



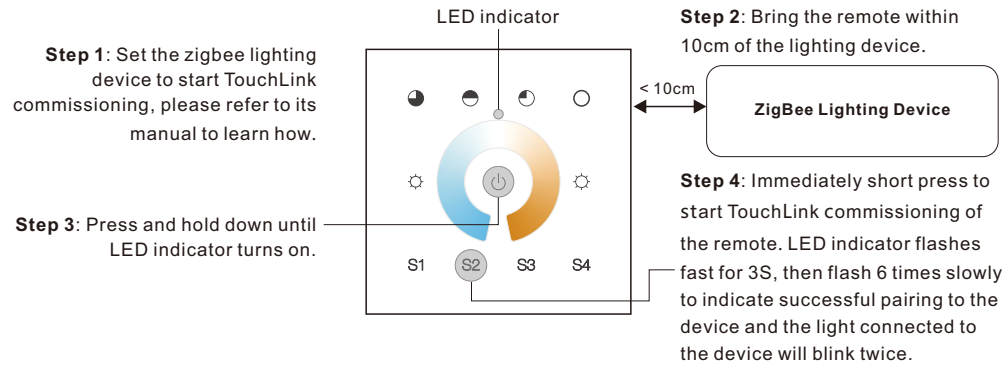
**Step 2:** From your zigbee controller or hub interface, choose to add device or accessory and enter Pairing mode as instructed by the controller.

**Step 4:** Immediately short press to search nearby network, indicator flashes every 1 second, 20 seconds timeout if there is no network. Indicator will then blink 5 times quickly for successful pairing.

**Note:** 1) After pairing successfully, the remote information will appear on the controller or hub interface.

2) No remote information will appear on the hub interface if pairing to some Zigbee hubs.

#### 4. TouchLink to a Zigbee Lighting Device



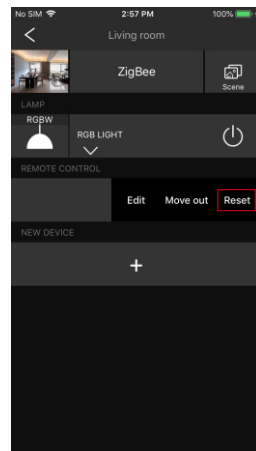
**Note:** 1) Directly TouchLink (both not added to a ZigBee network), each remote can link with 30 devices.

2) TouchLink after both added to a ZigBee network, each remote can link with max. 30 devices.

3) To control by both zigbee hub and remote, add remote and device to network then TouchLink.

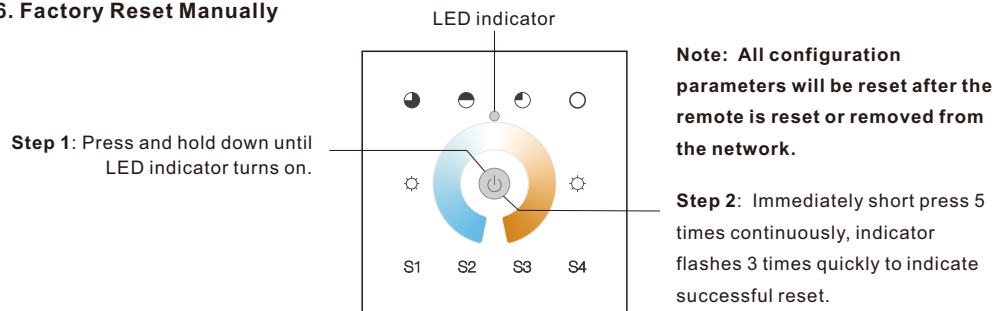
4) After TouchLink, the remote can control the linked lighting devices.

#### 5. Removed from a Zigbee Network through Coordinator or Hub Interface



From your ZigBee controller or hub interface, choose to delete or reset the remote as instructed, indicator flashes 3 times quickly to indicate successful removing.

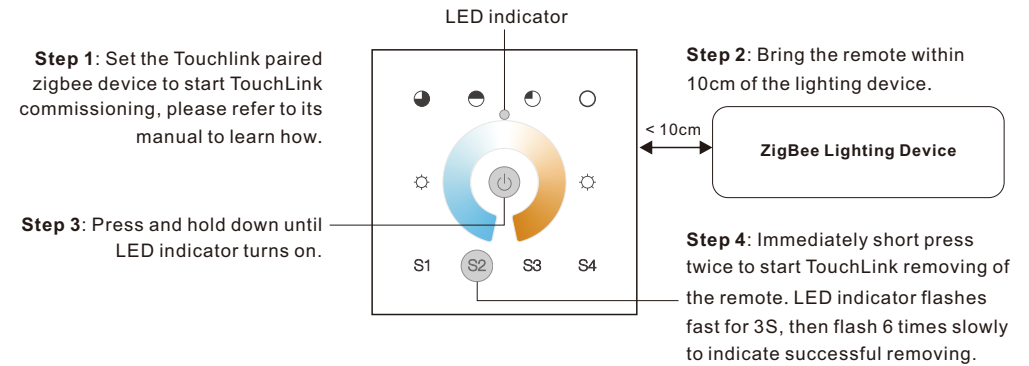
#### 6. Factory Reset Manually



**Note:** All configuration parameters will be reset after the remote is reset or removed from the network.

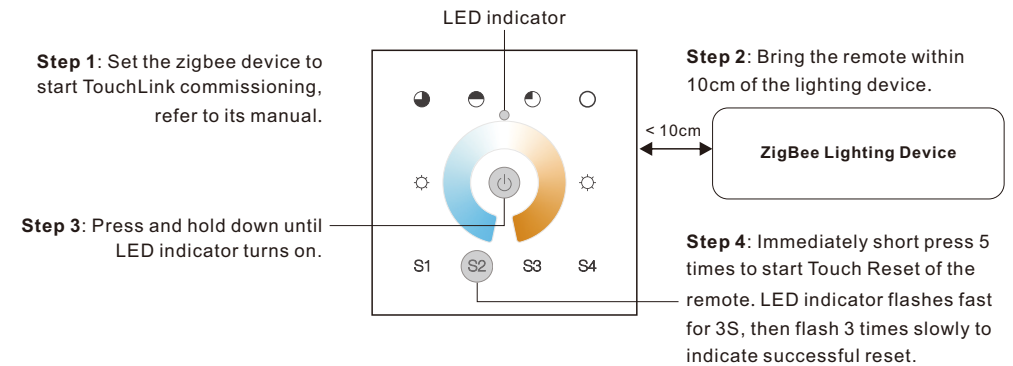
Step 2: Immediately short press 5 times continuously, indicator flashes 3 times quickly to indicate successful reset.

#### 7. Remove a Touchlink Paired ZigBee Lighting Device



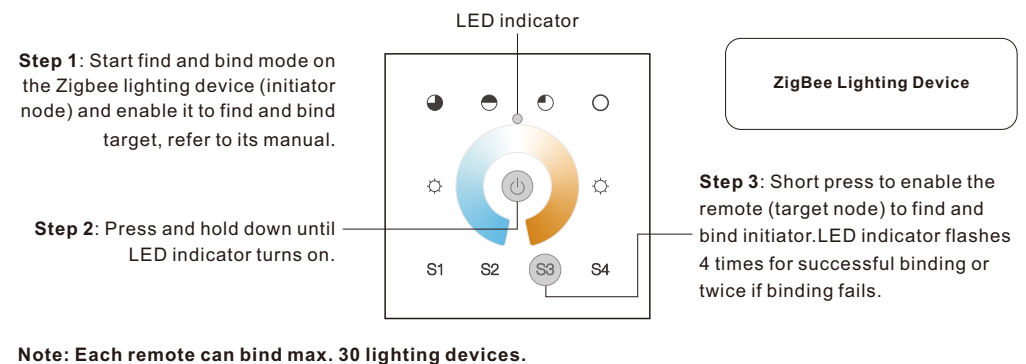
#### 8. Factory Reset a Lighting Device (Touch Reset)

**Note:** the device shall be added to a network, the remote added to the same one or not added to any network.



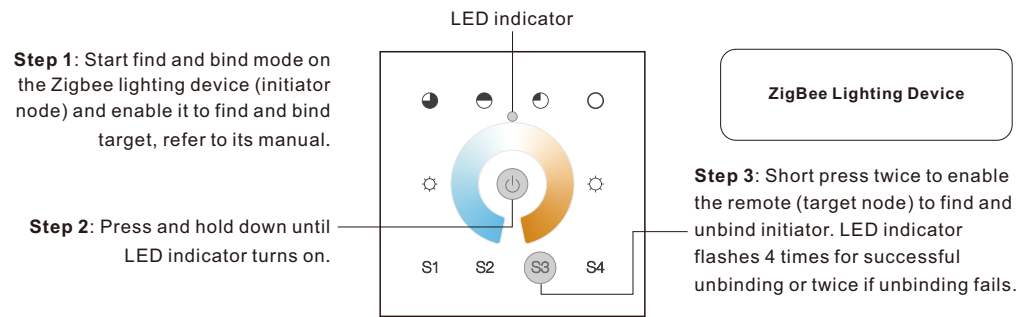
#### 9. Find and Bind a Zigbee Lighting Device

**Note:** Make sure the device and remote already added to the same zigbee network.

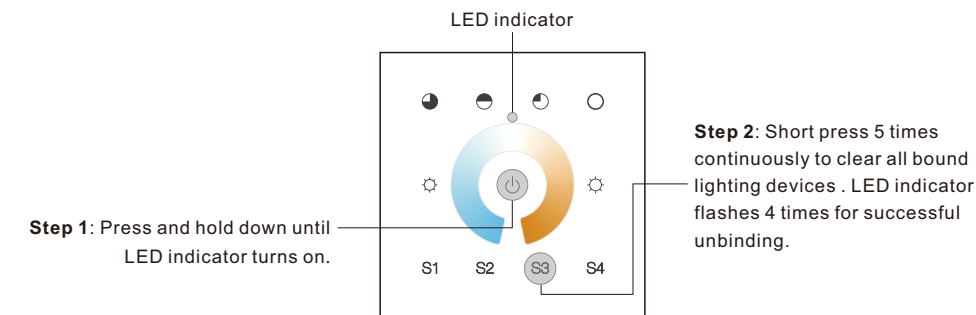


**Note:** Each remote can bind max. 30 lighting devices.

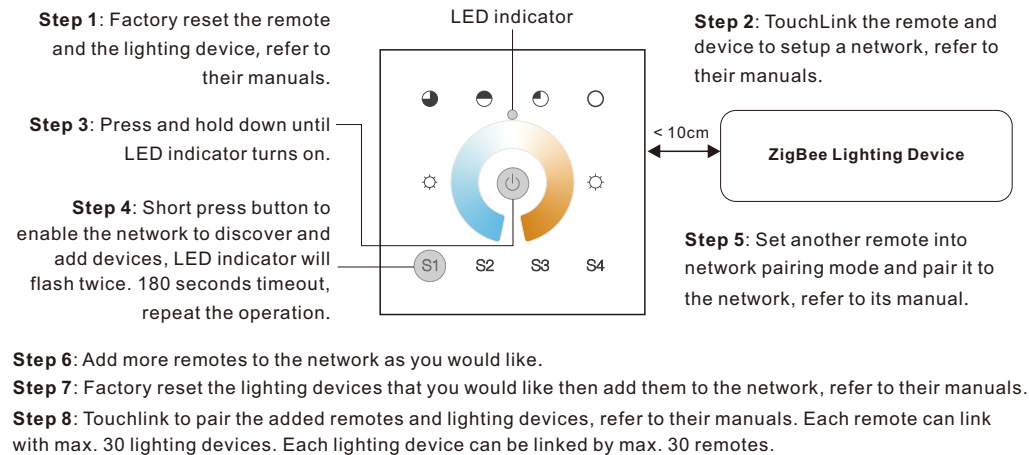
## 10. Find and Unbind a ZigBee Lighting Device



## 11. Clear All Find and Bind Mode Paired Lighting Devices



## 12. Setup a Network & Add Devices to the Network (No Coordinator or Hub Required)



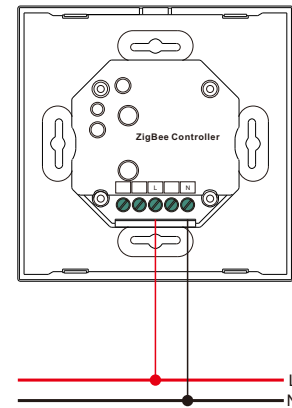
## 13. OTA

The remote supports firmware updating through OTA, and will acquire new firmware from zigbee controller or hub every 10 minutes automatically.

## 14. How to Check Whether the Remote Belongs to a Network or not

Short press any other buttons except group buttons, indicator blinking means the remote has already been added to a network, no blinking of indicator means the remote does not belong to any network.

### Wiring diagram



### Installation

