



RGB+CCT Remote (Zigbee 3.0)

Model No.: FUT089Z

# Features

This item is made by zigbee 3.0 standard protocol with low consumption, strong ability to set up internet and anti-interference. It can control on/off, RGB color, color temperature, saturation and brightness for zigbee 3.0 lights.



Zigbee 3.0 standard protocol



Compatible with all zigbee 3.0 lights



7 Zones can divide lights into different combinations easily



16 Millions of colors to choose



Color temperature adjustable



Dim brightness / saturation



Remote support add to the zigbee 3.0 gateway  
Can realize App and remote to control lights



Each zone can keep one favorite color, double click zone "I" key to get it (Need to add remote into zigbee gateway and set up by App)

# Parameters

Model No.: FUT089Z

Working Voltage: 3V (AAA \* 2PCS)

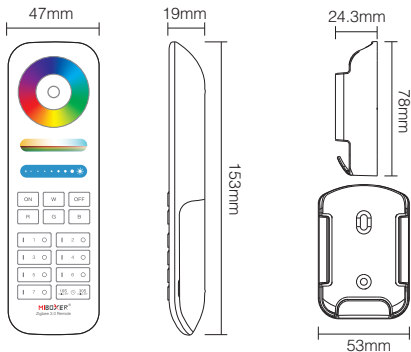
Transmitting Power: 10dBm

Standby Power Consumption: 20 $\mu$ A

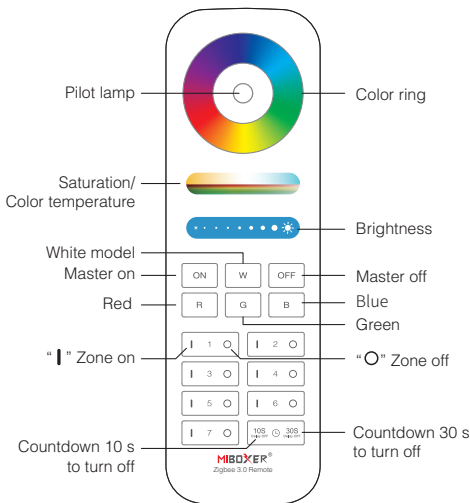
Max Controllable Lights: 25 Pcs

Control Distance: 100m (open area)

Working Temperature: -10~40°C



# Function



**Attention:** Please change battery if the indicator flashes frequently with low percentage.



Touch the color ring to change colors.



Under white light mode, adjust color temperature;  
Under color light mode, change color saturation.



Slide the brightness slider to adjust the brightness.



Switch to white color model



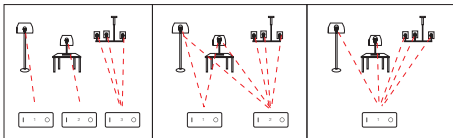
Master on, turn on all lights which had linked.



Master off, turn off all lights which had linked.

## Zone Control

It's flexible to create different zones. Each zone max connect with 25 lights. One remote support connection with 25 lights. One light can be controlled by same remote from different zones.

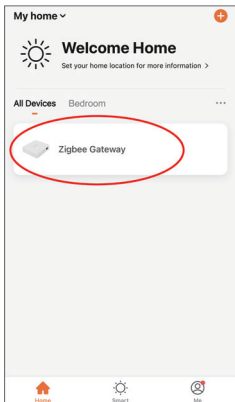


# Add remote into zigbee 3.0 gateway

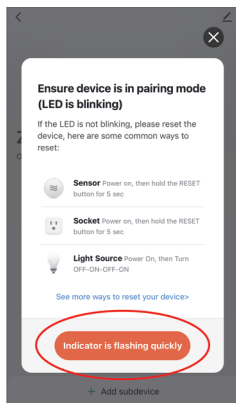
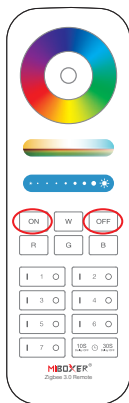
Zigbee lights can be controlled by remote, app or third party voice at the same time

## Method:

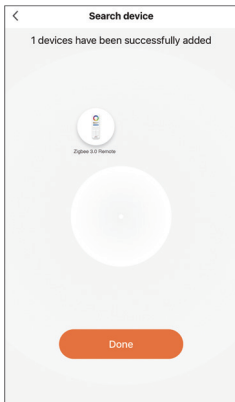
1. "MiBoxer Smart" app already added gateway.
2. Click "zigbee gateway" in "Home" interface and enter in.
3. Add subdevice.



4. Press " **ON** " and " **OFF** " button 5 seconds at the same time until indicator of remote flash one time with one seconds.
5. Click "**Indicator is flashing quickly**"



6. Click "**Done**", remote added into gateway successfully

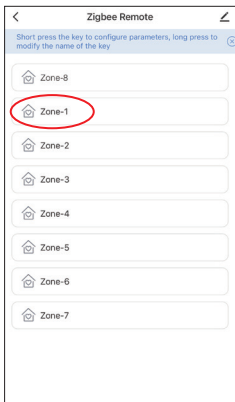
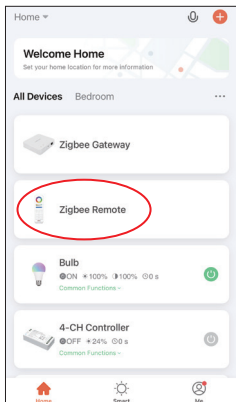




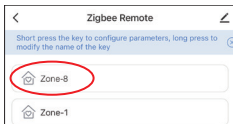
# Match and mismatch light

## (Remote already added into gateway)

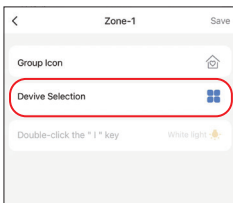
1. "MiBoxer Smart" app already added zigbee 3.0 gateway and some lights connected into zigbee gateway ( please read instruction for zigbee lights and find out solution for matching and mismatching).
2. Select "Zigbee Remote" and enter in.
3. Select zone which need to match or mismatch (eg:zone-1).



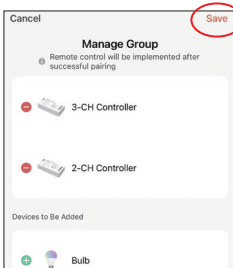
Attention: ON/OFF button on remote = Zone-8 on APP



4. Click " Device Selection"



5. Click select the controlled device and "Save"



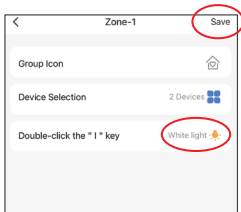
6. Double clicking "I" button to setup

1). Click **Double-click the "I" key** to enter setting

2). Press **"Save"** to complete

Explanation for double clicking  
"I" button

Select the favourite color or scene and save them, you can use  
"I" key to enjoy favourite color or scene quickly



## Attention

1. Please change battery if the indicator of remote flash frequently while you are using it. Don't use battery with poor quality, otherwise the battery is easy to liquid out and broke remote
2. Please don't use it in moist, high temperature, dusty or high voltage application since this model is accurate electronics. We suggest to keep it indoor, dry and none static electricity area
3. Please stay away from wide metal and high magnetic field, otherwise it will affect transmitting distance.



Made in China