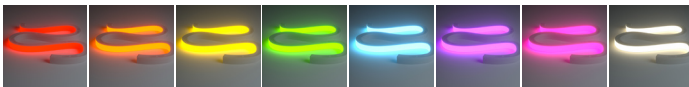
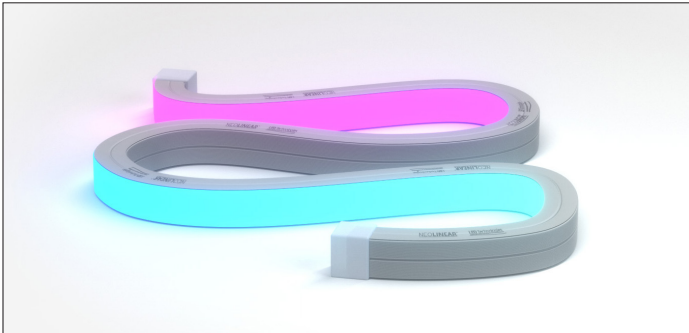


Neon Flex Express Pixel RGBW (4000K) Topview 5MTR | NEOLINEAR



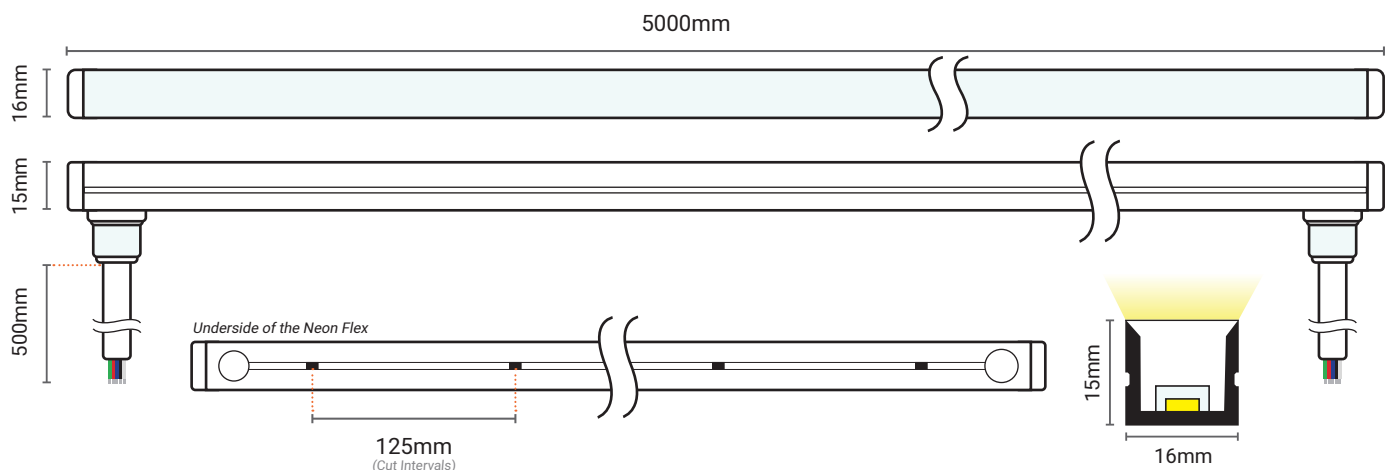
Product Code:	101.962
Product Type:	Neolinear™ Topview
Guarantee Period:	3 Years

Features & Benefits:

- DMX controllable LED pixel neon
- 8 x Quad colour (RGBW) pixels / m
- IC Type: UCS512C2L
- 80 x LED's /m
- 24v input voltage - 15w /m
- IP67 rated (waterproof)
- Linkable in 5m lengths (driver to each 5m length)

 **20z PCB Weight**  **2.2kg /roll appx**

Dimensions (Unit: mm)



Notes:

- The Neolinear™ Express cutting points are situated 125mm apart from each other. The cutting marks are shown as a black dot, recessed on the underside of the Neon Flex. The LED Strip must **NOT** be cut anywhere else.
- This Neon Flex (Topview) can be bent upwards and downwards like a roller coaster. Do not try and bend it left & right like a snake, otherwise you will risk damaging the product.

We reserve the right to change specifications without notice. E&OE. If you require Technical support or for general enquiries, please do not hesitate to contact one of our LED Technical experts on the contact information provided.

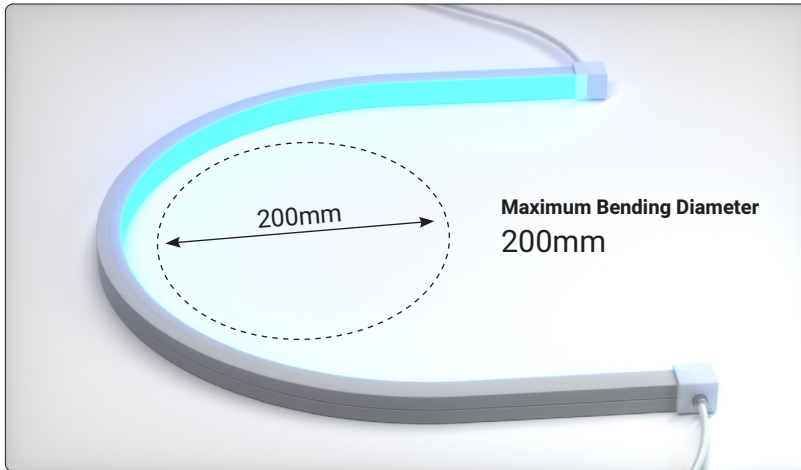
Colour:	Topview DMX RGB+4000K
Power:	75W
Current:	625mA/M
Input Voltage:	24V DC
LED Spacing:	12.5mm
Cut Intervals:	125mm
LED Quantity:	80 LEDs per Metre
LED Type:	5050RGBW 4 in 1 LEDs
Cross Section:	16x15mm
Beam Angle:	120°
CRI Rating:	>80
Lumens per LED:	R: 44 G: 119 B: 34 W: 153 (lm/m)
Lumens per Metre:	350lm/m
Light Intensity per LED:	4200-6800mcd
Power Consumption per Metre:	15W
IP Rating:	IP67
Average LED Lifetime:	30,000 Hours
Reel Size:	16 x 15 x 5000 (mm)
Reel Length:	5 Metres
Base Type (Both Sides):	Rear mould injection 50cm Cables
CE & RoHS	Yes
Continuous Run:	5 Metres



Opening times
Mon-Thur: 8:30am - 5:00pm
Fri: 8:30am - 4:30pm

Telephone: 01260 540014
www.ledtechnologies.co.uk

Neon Flex Express Pixel RGBW (4000K) Topview 5MTR | NEOLINEAR



Notes:

- This Neolinear™ Express product is powered by 75W, so we recommend using our **200W Neolinear™ LED Driver** (100.914) to safely power **5 Metres** of the strip.
- Ensure that the Neon Flex wires are connected to the correct terminals on the suitable LED Receiver chosen.
- *Our range of LED Neon Flex is not limited to RF Control Methods. Many other control options are available for our Neolinear™ Range, including DMX, DALI ZIGBEE & more.

+10% Tolerance on all Specifications. Colours can be variable.

We reserve the right to change specifications without notice. E&OE. If you require Technical support or for general enquiries, please do not hesitate to contact one of our LED Technical experts on the contact information provided.



Opening times

Mon-Thur: 8:30am - 5:00pm

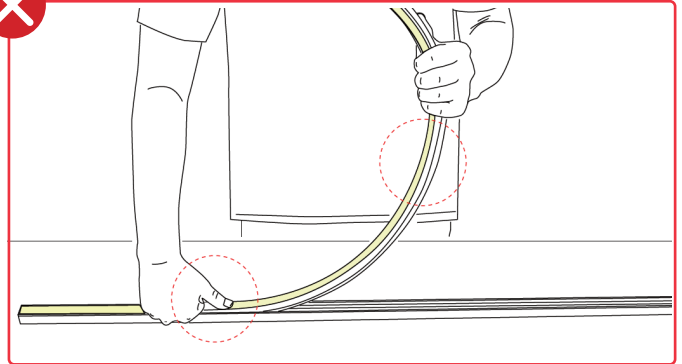
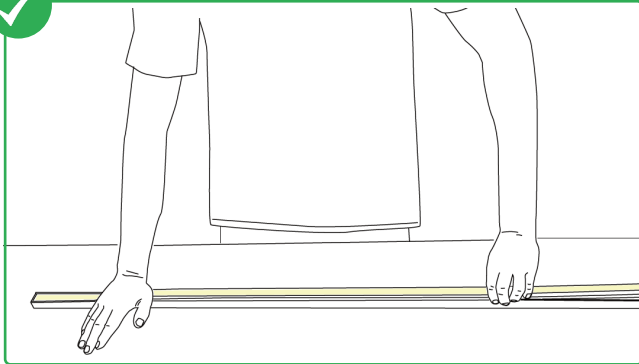
Fri: 8:30am - 4:30pm

Telephone: 01260 540014
www.ledtechnologies.co.uk

Neon Flex Express Pixel RGBW (4000K) Topview 5MTR | NEOLINEAR

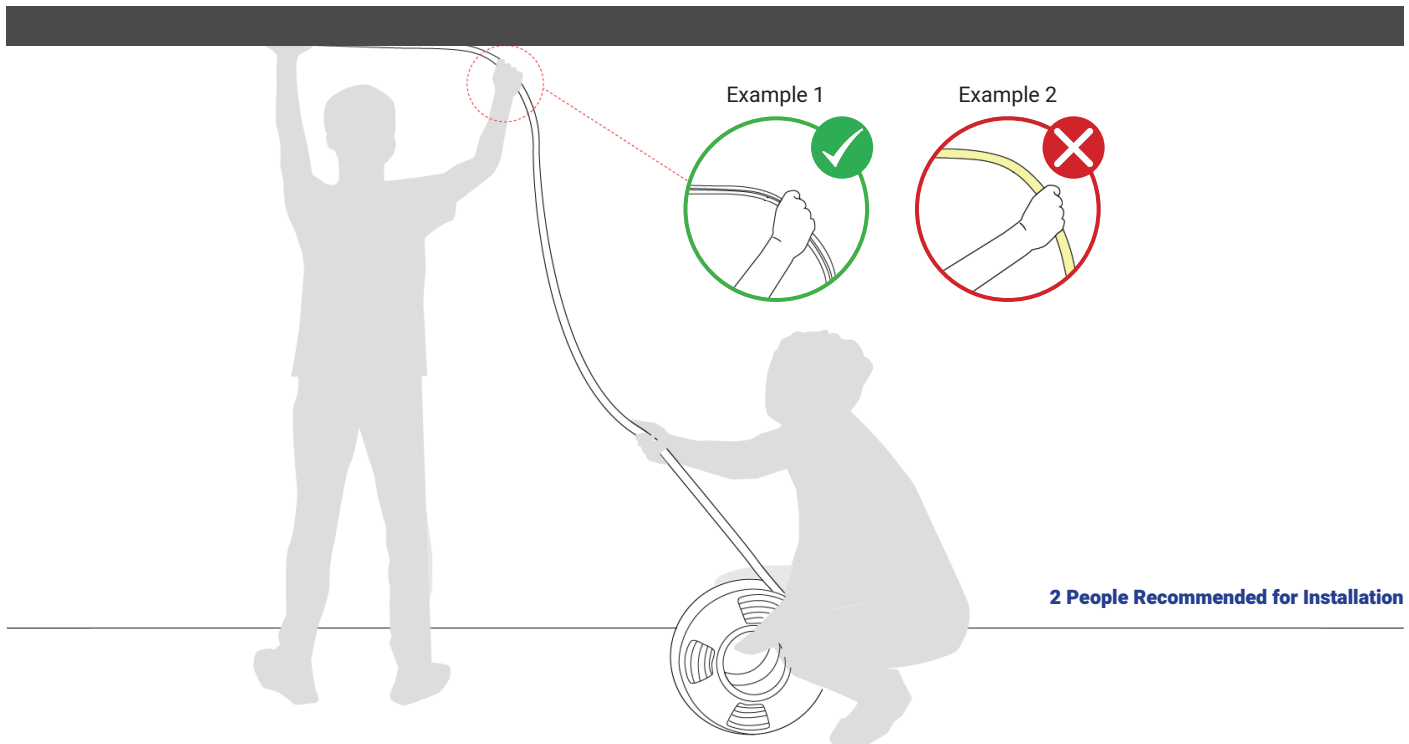
Installing the Neon Flex in a profile:

- The Neolinear™ Express should be pressed gently with the palm of your hand to insert the Neon into the profile safely.
- Keep the Neon Flex as straight as possible while inserting it into the profile to avoid damaging the product
- **DO NOT** press the Neon Flex down with a single finger. This can easily damage the inside of the Neon and won't be covered under Warranty
- **DO NOT** hold the Neon Flex at a bent angle when installing it into a profile. This can also damage the product if it is bent too much



Topview Installation Guide:

- The Neolinear™ Express should be pressed gently with the palm of your hand to safely and slowly install the Neon into place
- Prevent the Neon from drooping and bending in the wrong direction to avoid damaging the product during installation
- **DO NOT** hold the Neon's Luminous Surface or bend the Topview Neon left & right (pictured below - example 2) as this can damage the Neon
- Hold the Neon Flex by the sides at a 90° angle with your right hand, straightening only when installing it into place
- Ensure the person holding the reel keeps the Neon as straight as possible. Do not twist or pull during the installation



2 People Recommended for Installation

+10% Tolerance on all Specifications. Colours can be variable.

We reserve the right to change specifications without notice. E&OE. If you require Technical support or for general enquiries, please do not hesitate to contact one of our LED Technical experts on the contact information provided.



Opening times
Mon-Thur: 8:30am - 5:00pm
Fri: 8:30am - 4:30pm

Telephone: **01260 540014**
www.ledtechnologies.co.uk