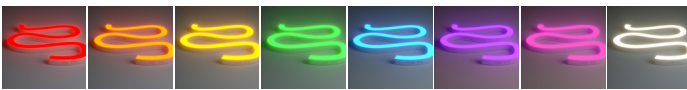
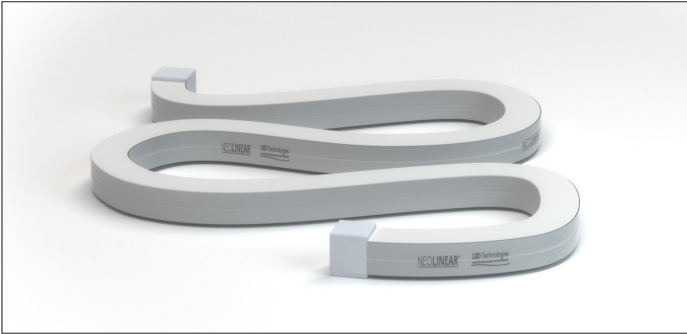


## Neon Flex Express RGBW (4000K) Sideview 10MTR | NEOLINEAR



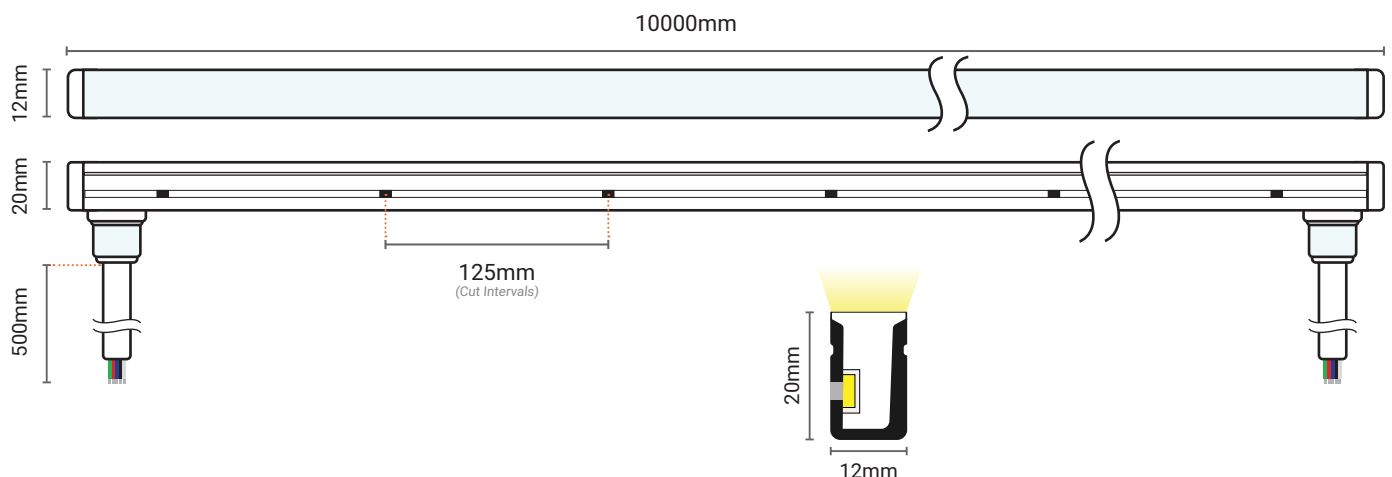
Product Code:	101.957
Product Type:	Neonlinear™ Sideview
Guarantee Period:	3 Years

### Features & Benefits:

- High grade RGBW LED Neon Flex
- Over 16 million colour combinations + Daylight White
- 50cm tails to both ends
- IP67 rated for outdoor / indoor use
- Side view (Flexes side to side)
- 200mm Maximum bend diameter
- Linkable up to 13m (power one end) 26m (power both ends)

 **3.95kg /roll** appx  **3oz** PCB Weight

### Dimensions (Unit: mm)



### Notes:

- The Neonlinear™ Express cutting points are situated 125mm apart from each other. The cutting marks are shown as a black dot, recessed on one side of the Neon Flex. The LED Strip must **NOT** be cut anywhere else.
- This Neon Flex (Sideview) can be bent left and right like a snake. Do not try and bend it upwards and downwards, otherwise you will risk damaging the product.

We reserve the right to change specifications without notice. E&OE. If you require Technical support or for general enquiries, please do not hesitate to contact one of our LED Technical experts on the contact information provided.

Colour:	Sideview RGB+4000K
Power:	150W
Current:	625mA/M
Input Voltage:	24V DC
LED Spacing:	10.4166mm
Cut Intervals:	125mm
LED Quantity:	96 LEDs per Metre
LED Type:	SMD5050
Cross Section:	12x20mm
Beam Angle:	120°
CRI Rating:	>80
Lumens per LED:	<b>R: 34 G: 120 B: 30 W: 152</b> (lm/m)
Lumens per Metre:	330lm/m
Light Intensity per LED:	4500mcd
Power Consumption per Metre:	15W
IP Rating:	IP67
Average LED Lifetime:	30,000 Hours
Reel Size:	12 x 20 x 10000 (mm)
Reel Length:	10 Metres
Base Type (Both Side):	Rear mould injection 50cm Cables
CE & RoHS	Yes
Continuous Run:	10m one end, 20m both ends

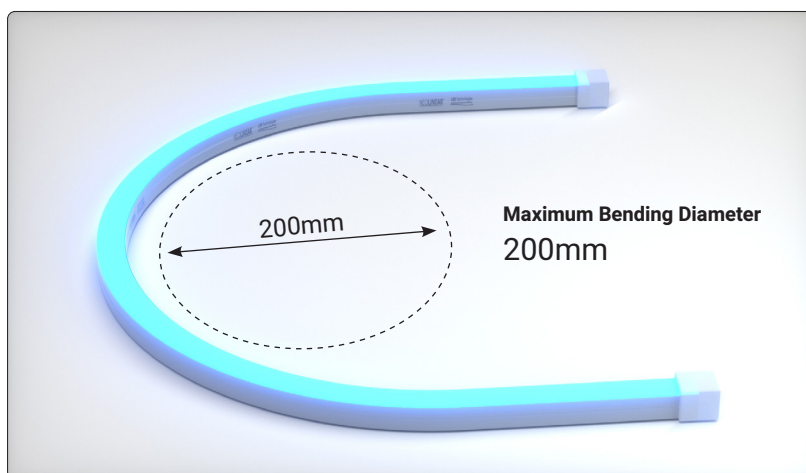
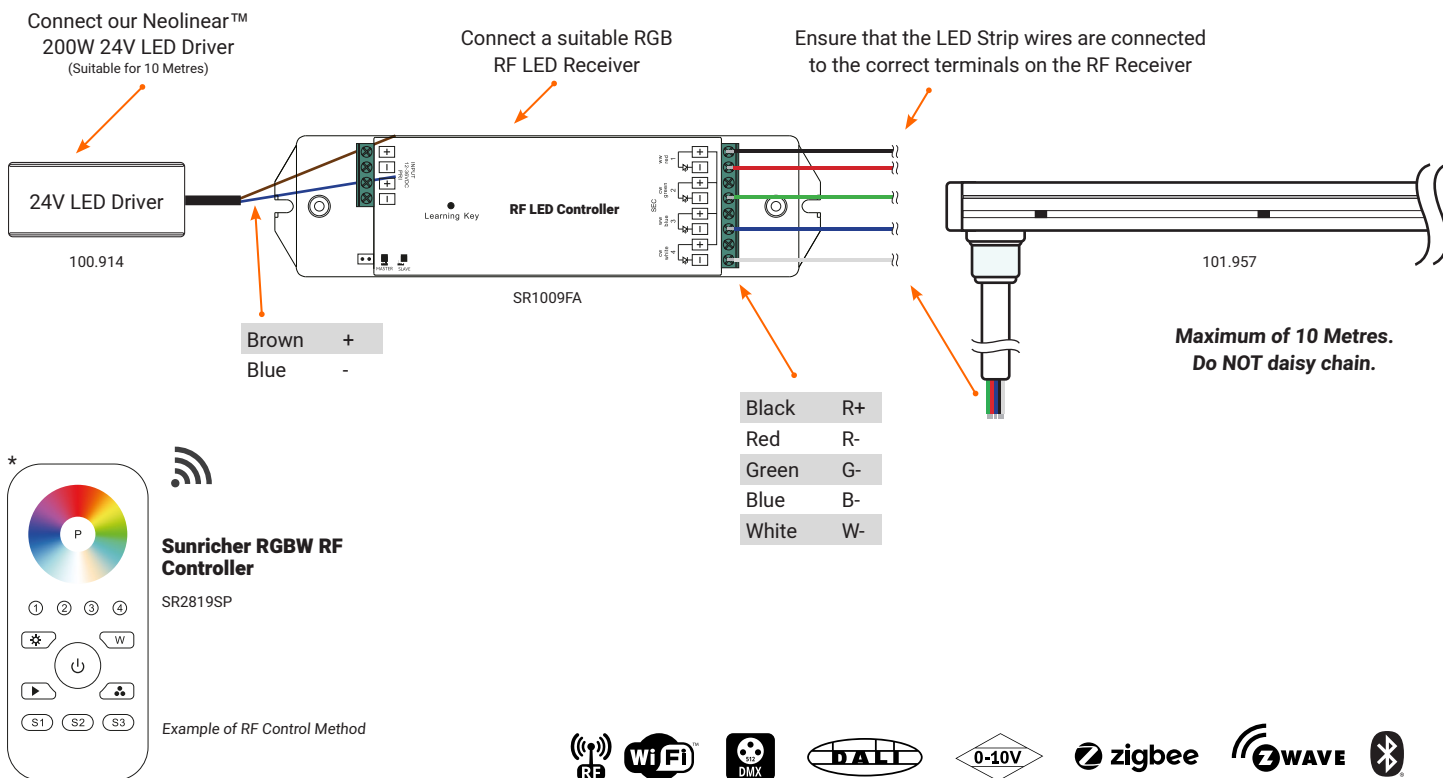


**Opening times**  
Mon-Thur: 8:30am - 5:00pm  
Fri: 8:30am - 4:30pm

Telephone: 01260 540014  
[www.ledtechnologies.co.uk](http://www.ledtechnologies.co.uk)

## Neon Flex Express RGBW (4000K) Sideview 10MTR | NEOLINEAR

### 101.957 Connection Diagram



#### Notes:

- This Neolinear™ Express product is powered by 150W, so we recommend using our **200W Neolinear™ LED Driver (100.914)** to safely power **10 Metres** of the strip.
- Ensure that the Neon Flex wires are connected to the correct terminals on the suitable LED Receiver chosen. Please see the diagram above for the correct terminals to attach each wire to.
- \*Our range of LED Neon Flex is not limited to RF Control Methods. Many other control options are available for our Neolinear™ Range, including DMX, DALI ZIGBEE & more.

**+10% Tolerance on all Specifications. Colours can be variable.**

**We reserve the right to change specifications without notice. E&OE.** If you require Technical support or for general enquiries, please do not hesitate to contact one of our LED Technical experts on the contact information provided.



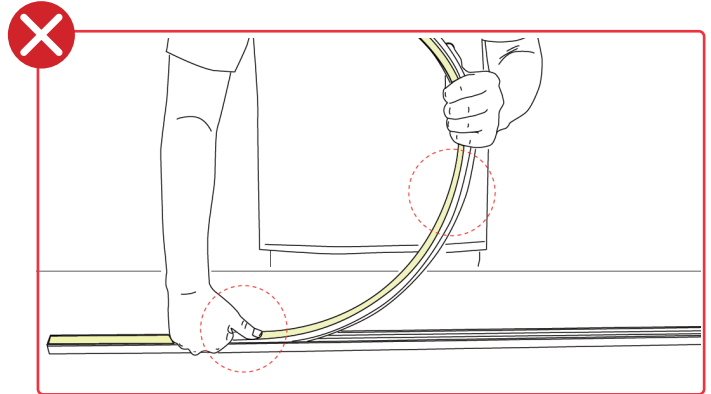
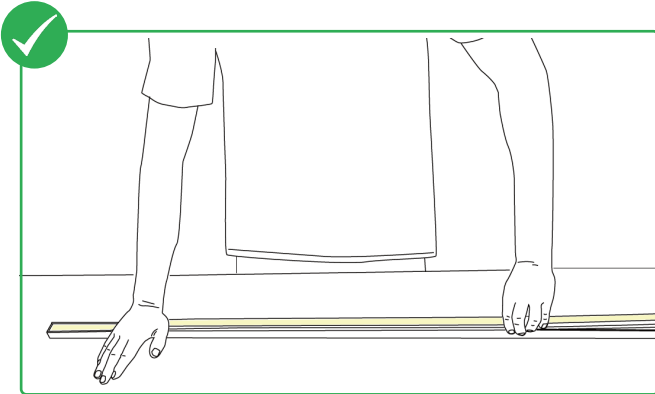
**Opening times**  
Mon-Thur: 8:30am - 5:00pm  
Fri: 8:30am - 4:30pm

Telephone: 01260 540014  
[www.ledtechnologies.co.uk](http://www.ledtechnologies.co.uk)

## Neon Flex Express RGBW (4000K) Sideview 10MTR | NEOLINEAR

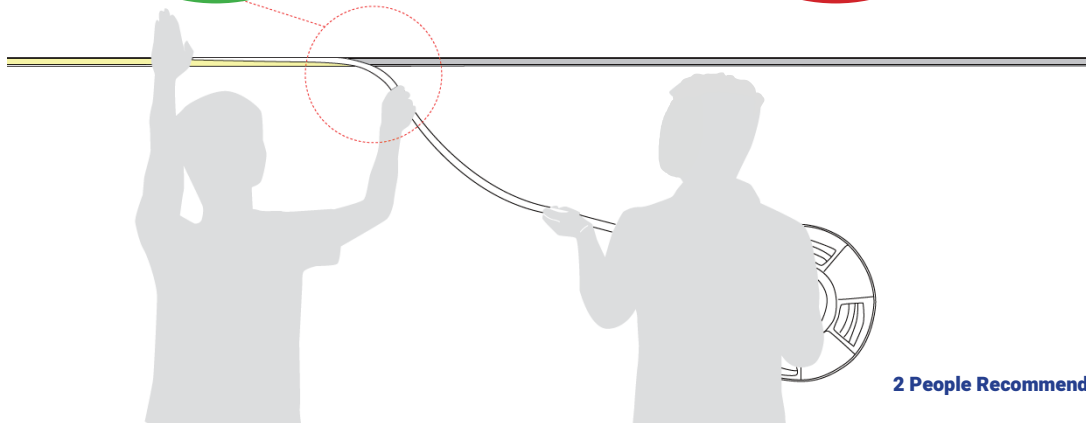
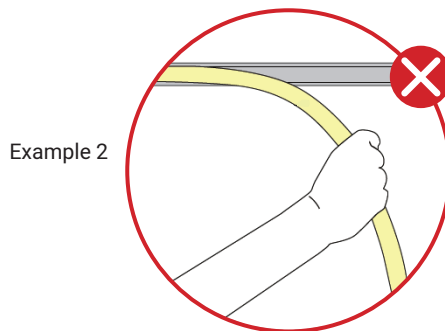
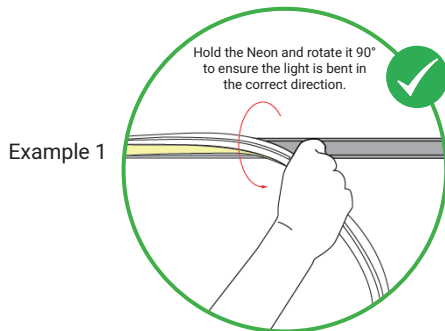
### Installing the Neon Flex in a profile:

- The Neolinear™ Express should be pressed gently with the palm of your hand to insert the Neon into the profile safely.
- Keep the Neon Flex as straight as possible while inserting it into the profile to avoid damaging the product
- **DO NOT** press the Neon Flex down with a single finger. This can easily damage the inside of the Neon and won't be covered under Warranty
- **DO NOT** hold the Neon Flex at a bent angle when installing it into a profile. This can also damage the product if it is bent too much



### Sideview Installation Guide:

- The Neolinear™ Express should be pressed gently with the palm of your hand to safely and slowly install the Neon into place
- Prevent the Neon from drooping and bending in the wrong direction to avoid damaging the product during installation
- **DO NOT** hold the Neon's Luminous Surface or bend the Sideview Neon up or down (pictured below - example 2) as this can damage the Neon
- Hold the Neon Flex by the sides at a 90° angle with your right hand, straightening only when installing it into place
- Ensure the person holding the reel keeps the Neon as straight as possible. Do not twist or pull during the installation



**2 People Recommended for Installation**

**+10% Tolerance on all Specifications. Colours can be variable.**

**We reserve the right to change specifications without notice. E&OE.** If you require Technical support or for general enquiries, please do not hesitate to contact one of our LED Technical experts on the contact information provided.



**Opening times**  
Mon-Thur: 8:30am - 5:00pm  
Fri: 8:30am - 4:30pm

Telephone: **01260 540014**  
[www.ledtechnologies.co.uk](http://www.ledtechnologies.co.uk)