

1. Features

Adopt DALI standard protocol IEC62386. Powered by DALI bus, digital tube display, simple and quick function setting. It can control the ON/OFF, color, color temperature, saturation and brightness of DALI lightings, and support scene saving and selection.

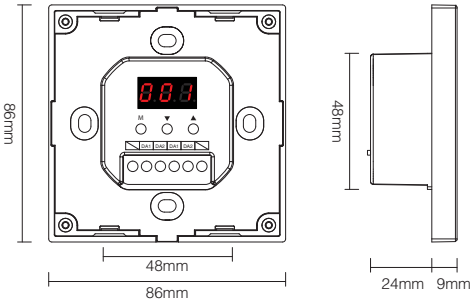
- Support DALI standard protocol IEC62386-102, 207, 209.
- Support DT8 type. Tc, xy coordinates, RGBWAF.
- Support 4 control modes: scene, grouping, unicast and broadcast.
- Support ON/OFF, color, color temperature, saturation, and brightness control.
- Digital tube displays address, group, scene. Function setting is simple and quick.
- Powered by DALI Bus.
- Touch control, sensitive touch.

2. Parameters

Model No.	DP3S
Power Supply	DALI Power
DALI Bus Standard	IEC62386
Output Signal	DALI Signal
Controlling Type	RGB (DT8 type: xy coordinates) RGBW (DT8 type RGBWAF) RGB+CCT (DT8 type: RGBWAF)
Standby Current	<4mA@16V
Working Temp.	-10~40°C
Weight	145g

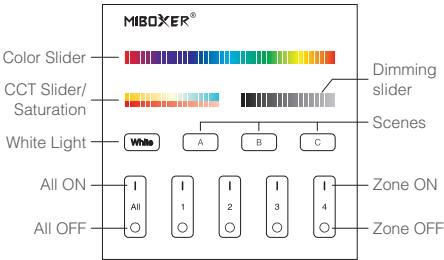
DALI Touch Panel

Model No.: DP3S






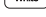






DALI 3 in 1 Touch Panel (DT8)

Model No.: DP3S



3. Button function instruction

-  Change lamp colors.
-  Adjust color temperature.
-  Under white light mode, adjust color temperature.
Under color light mode, change lamp colors.
-  Adjust brightness(1%~100%).
-  Short press to get white light mode.
-  Short press A or B or C or D to select scene.
 Long press A or B or C or D button to save the current light status to Ccorresponding scene (see more on instruction 5).
-  **Master ON:** Short press to turn on all the lights under groups 1-4 on this panel.
Long press for 5 seconds to turn on the button sound.
Zone on (1-4): Short press to turn on all the lights in the group.
-  **Master OFF:** Short press to turn off all the lights under groups 1-4 on the panel.
Long press for 5 seconds to turn off the button sound.
Zone OFF (1-4): Short press to turn off all lights in the group.
-  Indicator light: The group indicator light is always on, indicating that the group has been selected;
The indicators of the 4 groups are all on, indicating that all 4 groups are selected.

4. Function setting instruction

4.1 Digital tube display state instruction

Self-locking: If there is no operation for 5s, it will enter the locked state, and the digital tube will not display.
Unlocking: Long press the **M** button for 2s until the digital tube is highlighted, and the unlock is successful.

4.2 Control mode setting (Only DP3S have this function)

Under unlocked status, short press **M** button; until the digital tube display DP3-DP5, press **▲** button or **▼** button to switch (RGB, RGBW, RGB CCT) 3 different control mode.

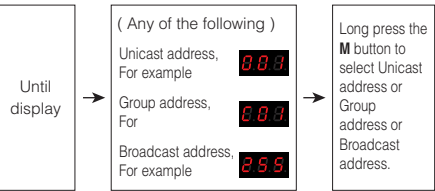
DP3 RGB dimming control mode (DT8 type:x-y)

DP4 RGBW dimming control mode (DT8 type:RGBWAF)

DP5 RGB CCT dimming control mode (DT8 type:RGBWAF)

4.3 DALI unicast address, group address and broadcast address settings

Under unlocked status, short press **M** button,



Unicast address:

When display (000-063): DALI panel is in unicast address mode. Short press **▲** or **▼** to set the start unicast address of DALI panel, long press can quickly adjust.

For example:

Panel set unicast address	Unicast addresses corresponding to the 4 groups			
	Zone-1	Zone-2	Zone-3	Zone-4
001	001	002	003	004
062	062	063	000	001

Group address:

When display (C00-C15): DALI panel is in group address mode. Short press the **▲** or **▼** to set the starting group address of the DALI panel, long press can quickly adjust.

For example:

Panel set group address	Group addresses corresponding to the 4 groups			
	Zone-1	Zone-2	Zone-3	Zone-4
001	01	02	03	04
014	14	15	00	01

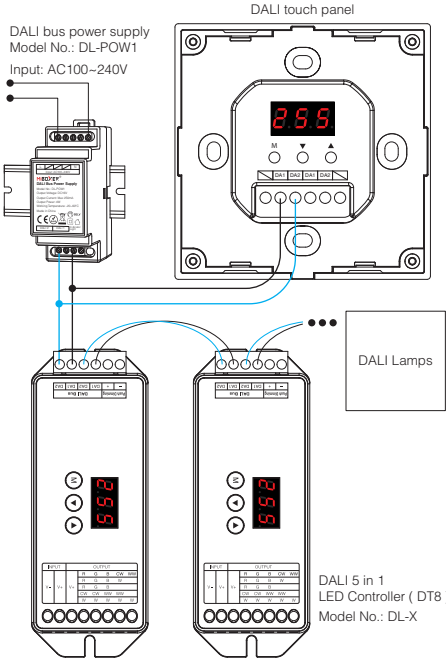
5. Scene setting

Under the unlocked state, short press the **M** button until the digital tube displays (E00-E15). Short press **▲** or **▼** to set the initial scene value of the DALI panel, long press for quick adjustment.

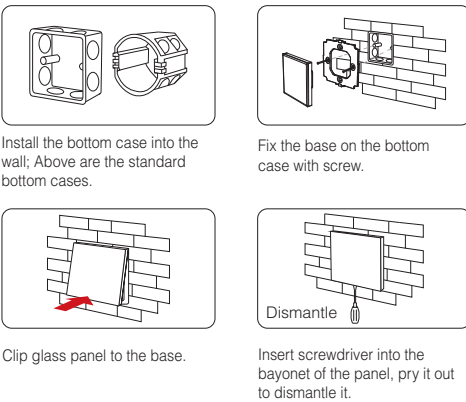
For example:

Setting to	Relative scene for (A B C D) button		
	DP1S	DP2S	DP3S
E03	(A) : Scenes 01	(A) : Scenes 01	(A) : Scenes 01
	(B) : Scenes 02	(B) : Scenes 02	(B) : Scenes 02
	(C) : Scenes 03	(C) : Scenes 03	(C) : Scenes 03
	(D) : Scenes 04	(D) : Scenes 04	
E34	(A) : Scenes 14	(A) : Scenes 14	(A) : Scenes 14
	(B) : Scenes 15	(B) : Scenes 15	(B) : Scenes 15
	(C) : Scenes 00	(C) : Scenes 00	(C) : Scenes 00
	(D) : Scenes 01	(D) : Scenes 01	

6. Connection Diagram



7. Installation / Dismantlement



8. Attention

- 1. The product shall be debugged and installed by professionals.
- 2. Before switching on the power, please ensure that all wiring is correct, so as not to cause damage to the device.
- 3. If there is faults, non-professional please do not repair without permission, otherwise the device may be damaged.