

## Panel Remote Controller

Model No.: T1 / T2 / T3 / T4 & B1 / B2 / B3 / B4

## Features

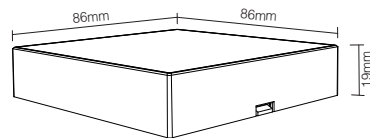
This panel remote controller is designed by a delicate and fashionable tempered glass panel; And we adopt a high precision capacitive touch screen IC. Touch screen is very stable; 2.4GHz high RF wireless control with long distance controlling, low power consumption and high speed transmitting rate. This product has T series and B series, and the difference is the method of power supplying. Both series have 4 kinds: T1/B1 4-zone dimmable panel remote controller; T2/B2 CCT 4-zone panel remote controller; T3/B3 4-zone RGB/RGBW panel remote controller; T4/B4 4-zone RGB+CCT panel remote controller. This product widely work on our smart LED Lighting, LED controller and smart panel controller, etc.

| Panel Remote Controller Name                      | Compatible Remote Model | Compatible Products       |
|---|-------------------------|---------------------------|
| 4-Zone brightness dimming Panel Remote Controller | FUT091                  | Brightness dimming series |
| 4-Zone CCT adjust panel remote controller         | FUT091                  | CCT adjust series         |
| 4-Zone RGB/RGBW panel remote controller           | FUT095/FUT096           | RGB / RGBW series         |
| 4-Zone RGB+CCT panel remote controller            | FUT092                  | RGB / RGBW RGB+CCT series |

## Parameters

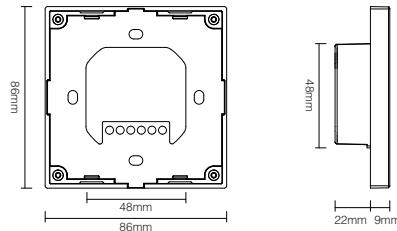
### B Series: Powered by 3V(2\*AAA Battery)

Working Voltage: 3V(2\*AAA Battery) Modulation Method: GFSK  
Transmitting Power: 6dBm Control Distance: 30m  
Standby Power: 20uA Working Temp.: -20-60°C  
Transmission Frequency: 2.4GHz Size: 86\*86\*19mm



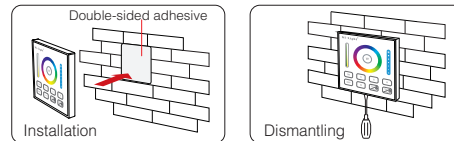
### T Series: Powered by AC90-110V or AC180-240V

Working Voltage: AC90-110V or AC180-240V Control Distance: 30m  
Transmitting Power: 6dBm Working Temp.: -20-60°C  
Transmission Frequency: 2.4GHz Size: 86\*86\*31mm  
Modulation Method: GFSK

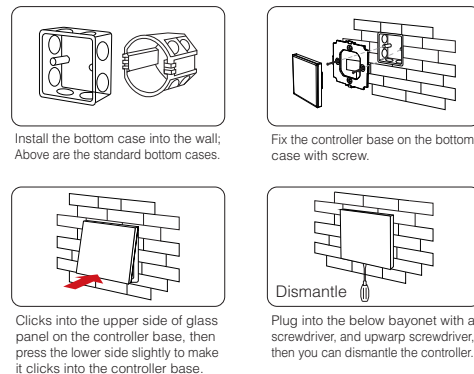


## Installation/ Dismantlement

### B series Installation/ Dismantlement



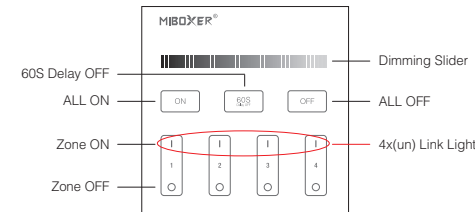
### T series Installation/ Dismantlement



## Function of keys

**Remark:** When touching the button, LED indicating lamp will flash once with different sound (Touch slider with no sound).

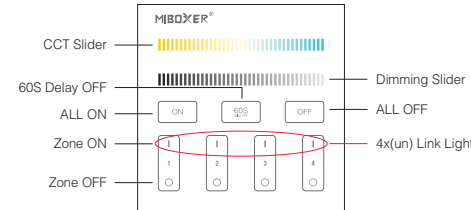
### B1 & T1 4-Zone Panel Remote Controller ( Brightness )



Touch dimming slider to change the brightness from 1~100%.

- ON** Touch master ON, turn on all linked lights. Long press 5 seconds to turn ON the indicating sound.
- 60S** When the light is ON, press "60S Delay OFF", the light will be OFF Automatically after 60 seconds.
- OFF** Touch master OFF, turn off all linked lights. Long press 5 seconds to turn OFF the indicating sound.
- |** Touch Zone ON, turn on zone-linked lights.
- Touch Zone OFF, turn off zone-linked lights.

### B2 & T2 4-Zone Panel Remote Controller ( Color Temp. )

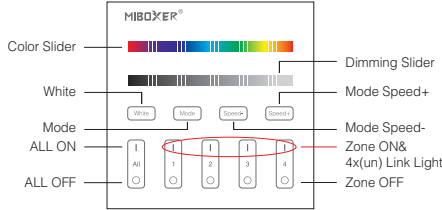


Touch the slider to change color temperature.

Touch dimming slider to change the brightness from 1~100%.

- ON** Touch master ON, turn on all linked lights. Long press 5 seconds to turn ON the indicating sound.
- 60S** When the light is ON, press "60S Delay OFF", the light will be OFF Automatically after 60 seconds.
- OFF** Touch master OFF, turn off all linked lights. Long press 5 seconds to turn OFF the indicating sound.
- |** Touch Zone ON, turn on zone-linked lights.
- Touch Zone OFF, turn off zone-linked lights.

**B3 & T3**  
**4-Zone Panel Remote Controller ( RGB )**



Touch color slider, choose the color you want.

Touch dimming slider to change the brightness from 1~100%.

White Touch white button to white light mode.

Mode Switching modes.

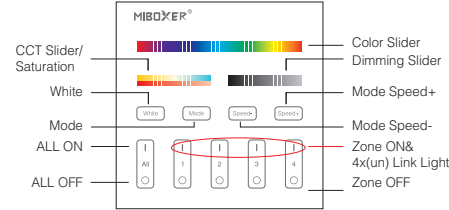
Speed- Slow the speed on present dynamic mode.

Speed+ Accelerate the speed on present dynamic mode.

**ALL ON:** Touch to turn on all linked lights.  
Long press 5 seconds to turn ON the indicating sound.  
**Zone(1-4) ON:** Touch zone ON, turn on zone-linked lights.

**ALL OFF:** Touch to turn off all linked lights.  
Long press 5 seconds to turn OFF the indicating sound.  
**Zone(1-4) OFF:** Touch zone OFF, turn off zone-linked lights.

**B4 & T4**  
**4-Zone Panel Remote Controller ( RGB+CCT )**



Touch color slider, choose the color you want.

Under white light mode, adjust color temperature;  
Under color light mode, change color saturation.

Touch dimming slider to change the brightness from 1~100%.

White Touch white button to white light mode.

Mode Switching modes.

Speed- Slow the speed on present dynamic mode.

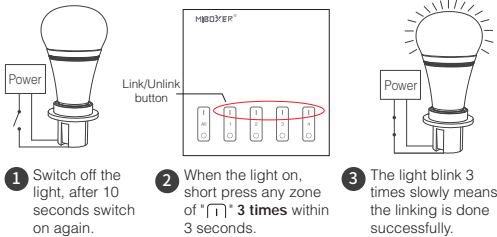
Speed+ Accelerate the speed on present dynamic mode.

**ALL ON:** Touch to turn on all linked lights.  
Long press 5 seconds to turn ON the indicating sound.  
**Zone(1-4) ON:** Touch zone ON, turn on zone-linked lights.

**ALL OFF:** Touch to turn off all linked lights.  
Long press 5 seconds to turn OFF the indicating sound.  
**Zone(1-4) OFF:** Touch zone OFF, turn off zone-linked lights.

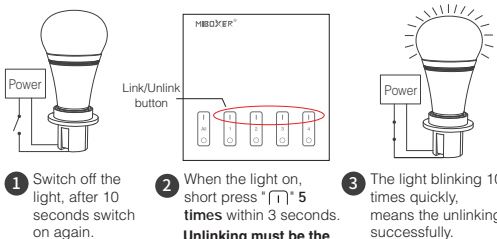
**Link / Unlink (B1&T1,B2&T2,B4&T4)**

**Linking Instructions**



⚠ If the light not blink slowly, the linking failed, pls switch off the light again, and follow the above steps again.

**Unlinking Instructions**

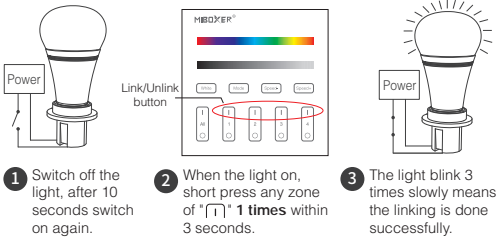


**Unlinking must be the same zone with the Linking**

⚠ If the light not blink quickly, the unlink failed, pls switch off the light again, and follow the above steps to unlink again.

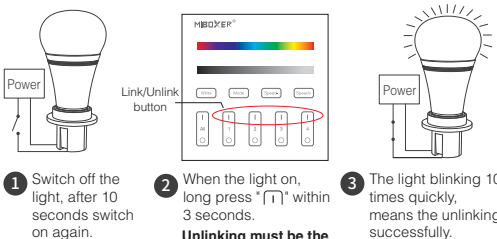
**Link / Unlink (B3&T3)**

**Linking Instructions**



⚠ If the light not blink slowly, the linking failed, pls switch off the light again, and follow the above steps again.

**Unlinking Instructions**



**Unlinking must be the same zone with the Linking**

⚠ If the light not blink quickly, the unlink failed, pls switch off the light again, and follow the above steps to unlink again.

**Attention**

1. Please check the cable, and make the circuit is correct before power on.
2. When installation, pls handle with care to avoid the broken of the glass panel.
3. Please do not use lighting fixtures around the mental area and high magnetic field, otherwise, it will badly affect the control distance.



Made in China