

## LEDTech CCT Adjustable 3000-6500K LED Downlighter

### Features & Benefits

- ✓ CCT Adjustable (3000-6500K)
- ✓ 6W
- ✓ Bright vivid shades of white
- ✓ 3 Year Guarantee
- ✓ Commercial & domestic Installations
- ✓ Professional Product
- ✓ Ceiling mountable
- ✓ Multiple Applications

### Quick Specs

|           |        |            |         |           |
|-----------|--------|------------|---------|-----------|
| IP20      |        | >80        | 24V     | 3yr       |
| IP Rating | Colour | CRI Rating | Voltage | Guarantee |

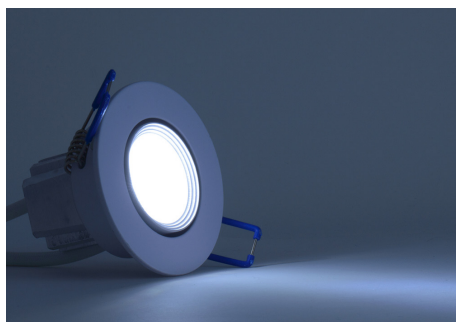
### Full Specification

|                     |                           |
|---------------------|---------------------------|
| Product Code:       | 101.182                   |
| Colour Temperature: | 3000 - 6500K              |
| Guarantee Period:   | 3 Years                   |
| Wattage:            | 6W                        |
| Current:            | 550mA/M                   |
| Input Power:        | 12-24VDC                  |
| PCB Weight:         | n/a                       |
| Weight:             | 12.00 Kgs                 |
| Size:               | 68 Diameter - 55mm Height |
| Reel Length:        | n/a                       |
| Beam Angle:         | 60°                       |
| LED Spacing:        | n/a                       |
| Power consumption:  | 8W                        |
| Lumens p/LED:       | WW200lm<br>CW220lm        |

|                         |                             |
|-------------------------|-----------------------------|
| Lumens p/m:             | n/a                         |
| Millicandelas:          | 2100                        |
| CRI (Greater than):     | >80                         |
| Dimmable:               | Yes                         |
| Cutout:                 | 55mm                        |
| LED Qty:                | 1                           |
| LED Type:               | SM2216                      |
| IP Rating:              | IP20                        |
| Continuous run in mtrs: | Max 25 Daisy chained in one |
| Average LED life:       | 30,000                      |
| Base type:              | 50cm tails at both ends     |
| CE & ROHS:              | Yes                         |
| Operation Temp          | -20°C ~ +40°C               |
| Product type:           | LED Downlighter             |

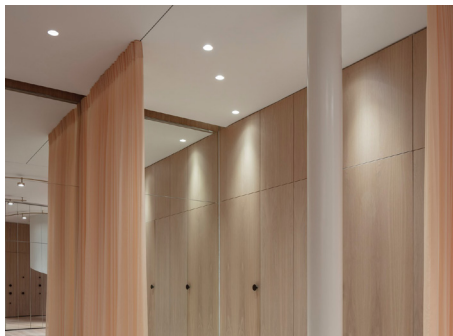
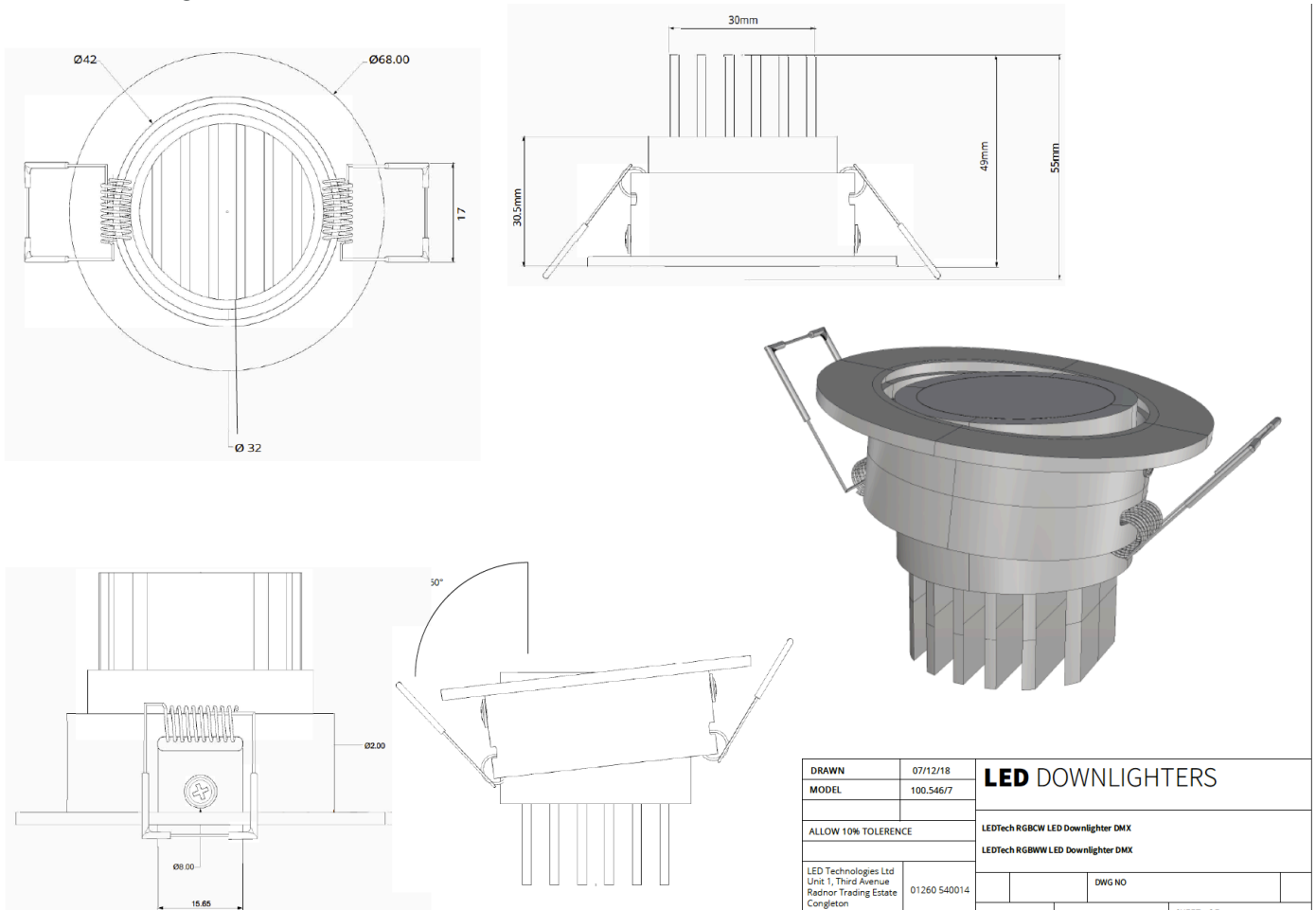
### Schematic Drawing

Units: mm



### Schematic Drawing

Units: mm



### Technical Support

If you require any technical support or have an enquiry, please do not hesitate to contact one of our LED technical experts on the contact information provided.

**Telephone:** 01260 540014

**Opening times:** Mon-Thur: 9:00am - 5:30pm / Fri: 8:30am - 5:00pm

**www.ledtechnologies.co.uk**

The above data are typical values and may vary +/- 10%.

**We reserve the right to change specifications without notice - E&OE.**



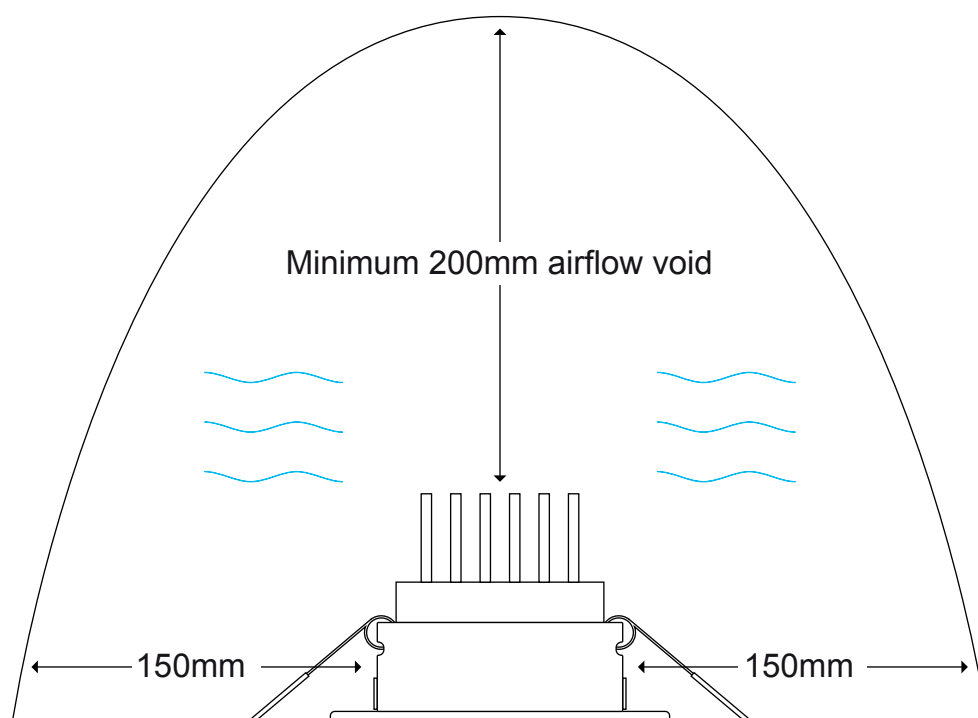


### Important Note:

When installing our LED Downlighters into a ceiling void, due to a potential heat build-up on the rear of the unit, it is important that there is an airflow gap around the heat sink of a minimum of 200mm from the top of the heat sinks to allow airflow.

There must be a gap of at least 150mm between each unit. See drawing. With RGBW and RGB units it is recommended that you do not run at 100% on each colour channel.

Downlighters should not be installed in any area where there is an insulation layer around the heatsink as this will cause the units to overheat and the LED's to fail, invalidating the warranty. If in doubt please contact us directly for assistance.



If you require any technical support or have an enquiry, please do not hesitate to contact one of our LED technical experts on the contact information provided.

**Telephone:** 01260 540014

**[www.ledtechnologies.co.uk](http://www.ledtechnologies.co.uk)**

The above data are typical values and may vary +/- 10%.

**We reserve the right to change specifications without notice - E&OE.**